



HOJER RANCH

37th Annual
GELBVIEH & BALANCER
Production Sale

DITKA



CIVIL WAR



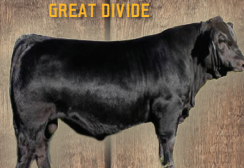
ASTRO



CHIEF JUSTICE



GREAT DIVIDE



SALE OFFERING - 110 REGISTERED BULLS AND 40 REGISTERED HEIFERS
AVAILABLE PRIVATE TREATY - 500 HIGH QUALITY COMMERCIAL HEIFERS

MONDAY, MARCH 6, 2023 at 1:00 PM

at the Ranch, west of Lake Preston
43968 208th Street • Lake Preston, SD

PERFORMANCE GENETICS FOR YOUR TOMORROW

Find us on 

Videos Available Online at HojerRanch.com and DVAuction.com

HOJER RANCH

31st Annual **GELBVIEH & BALANCER** *Production Sale*

SELLING 109 YEARLING BULLS AND 39 HIGH QUALITY HEIFERS

MONDAY, MARCH 6, 2023 at 1:00 PM

AT THE RANCH, WEST OF LAKE PRESTON
43968 208th Street • Lake Preston, SD

AUCTIONEER Tracy Harl • 605 East County Rd • Wellington, CO 80549 • 402-469-3852

SALE DAY PHONE CONTACTS

Blake: 605-860-0139

Alan: 605-860-1326

Christian: 605-860-8635

SALE DAY SCHEDULE

10 AM – Sale cattle penned in the
Bull Pens and available for viewing

11 AM – Roast Beef Lunch

1 PM – Bull Sale Begins

LIVESTOCK REPRESENTATIVES/RINGMEN

Jeff Kapperman, Tristate Neighbor: 605-363-3302

Jim Scheel, Cattle Business Weekly: 605-545-1521

Tom Strahm, American Gelbvieh Assn: 785-547-7999

VIDEOS

Videos of the sale cattle are
available for viewing on our
website: www.hojerranch.com
Bid online!

DVAuction
Broadcasting Real-Time Auctions

Dear Cattlemen and Cattlewomen,

Greetings from our family to yours and welcome to our 31st Annual Production Sale. I have been sharing the optimism on the cattle industry for a couple years and now it has arrived. Please take time to read some facts about your industry that I shared on page 30 under the explanation of the "You Pick 'Em, We Breed 'Em" Program. Your cattle industry is in a great position and the cow/calf segment of the industry is about to see profit levels not seen before, and you will see these profit levels for the next several years. YOU are back in the driver's seat with leverage. Demand for your calves has never been greater and will only increase.



Again, our systems approach to serving you has and will continue to grow in 2023. We will again offer 500 head of Maternal Selected high quality females to help you build your cow herd for the future. See page 38 and plan for your replacements as you enter these very profitable times. A heifer that is purchased in 2023 and calves in 2024 will have at least 3 of the top selling calves of this cattle cycle. The "Bull Care and Developer Program" has continued to grow in popularity as people recognize the need to care for the young bulls to ensure longevity and bull health. Take a look on page 29.

As we enter our 31st Annual Production Sale, Blake continued to put pressure on Genetic Selection and his decisions will challenge the performance of any Bulls & Females both in this breed as well as any breed. You will agree when you see this offering on March 6th!

Like past sales, we are offering Fall, Winter Yearling, and Spring Yearling Bulls. You will find high quality in this offering to help you add the length to your calves to maximize the pounds you sell to the market. Again, we are moving into some very profitable times and you get paid by the pound! We are also offering a high quality set of replacement heifers — both Registered and Commercial. Take a look and plan for your replacements needs by utilizing the "You Pick 'Em, We Breed 'Em" Program on all the heifers being offered.

Please call Blake, Alan, or Christian with any questions that you have and we would welcome the opportunity to show the cattle before the sale or on sale day.

This offering of bulls and heifers are of the quality that are amongst the Best Top Performance Genetics in the US for 2023. To take advantage of the Market that has now arrived, don't underestimate the Power of Crossbreeding with the Genetics from this offering. Crossbreeding has a significant advantage over straight breeding both in the health of the calf and the performance of the calf, which convert to a significant increase in dollars in your pocket.

See you at the Sale!

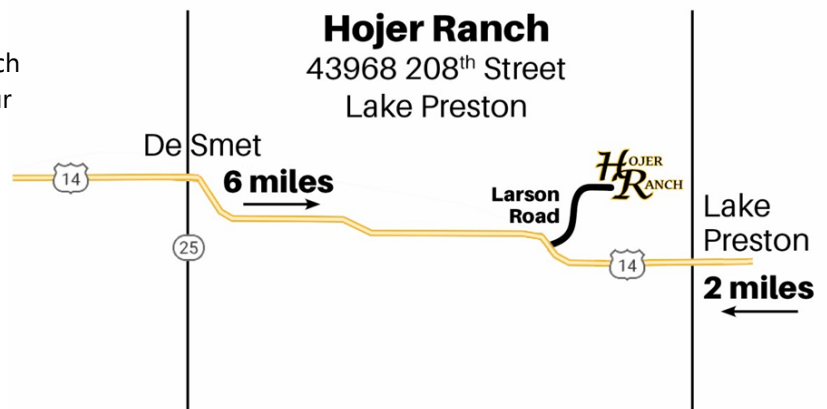
The Hojers

-Alan & Pam, Blake & Jenn, Christian

JOIN US AT THE RANCH ON SALE DAY!



We are very excited to have our Production Sale at the Hojer Ranch Headquarters again this year. Our location is easily accessible from Highway 14. Please use the map for your directions. Look for our sign on our corner. Using our 911 address in GPS will take you to a different location. We wish you safe travels and look forward to seeing you all on March 6th!



HOJER RANCH *31st Production Sale*

Gelbvieh EPDs

BIRTH WEIGHT (BW): Predicts the difference, in pounds, for birth weight.

CALVING EASE DIRECT (CED): An EPD that is expressed as a percent of unassisted births of a bull's calves when he is used on heifers.

A higher number is favorable, meaning better calving ease.

WEANING WEIGHT (WW): Predicts the difference, in pounds, for weaning weight (adjusted to age of dam and a standard 205 days of age).

This is an indicator of growth from birth to weaning.

YEARLING WEIGHT (YW): Predicts the expected difference, in pounds, for yearling weight (adjusted to standard 365 days of age).

This is an indicator of growth from birth to yearling.

MILK: The genetic ability of a sire's daughters to produce milk expressed in pounds of weaning weight.

TOTAL MATERNAL (TMAT): A value that combines growth and milk information and a prediction of the weaning weight performance of calves from a sire's daughter. This value does not have an accompanying accuracy value.

CALVING EASE MATERNAL (CEM): Represented as percent of unassisted births in a sire's first-calving daughters. A higher number represents more favorable calving ease.

WEIGHT PER DAY OF AGE (WDA): Calculated by $\frac{\text{Current Weight}}{\text{Days of Age}}$

ADJUSTED WEANING WEIGHT (ADJ. WW): Weight, in pounds, the calf would be at 205 days of age and adjusts for age of dam and sex of calf. Uses the following formula:

$$\frac{(\text{Actual weaning weight} - \text{actual birth weight})}{\text{Actual Age in Days}} \times 205 + \text{Actual Birth Weight} + \text{Dam Adj.}$$

ADJUSTED YEARLING WEIGHT (ADJ. YW): Weight, in pounds, the animal would be at 365 days of age. Uses the following formula:

$$\frac{(\text{Actual Weight} - \text{Actual Weaning Weight})}{\# \text{ of days between weights}} \times 160 + 205 \text{ day Adjusted Weaning Weight}$$

AVERAGES		
EPD	GV	BA
CED	12	13
BW	0.0	-0.5
WW	68	71
YW	99	110
Milk	21	20
TM	55	55
CEM	6	7

For more information or explanation of EPDs, please contact us at one of the following numbers:

605-847-4155 (Ranch)

605-860-0139 (Blake)

605-860-1326 (Alan)

Watch & bid online for FREE at

DVAuction
Broadcasting Real-Time Auctions

View the Auction Live!
Bid Online... you're ringside right at your desk!

Buying online is as easy as 1,2,3...

1. Create an account at www.dvauction.com under the "register" tab
2. Apply for bidding approval by clicking on the "details" tab at least 24 hours prior to the auction-a DV representative will notify you once you have been approved
3. Tune in for the sale and make your purchases!

High speed internet is required for successful bidding-be sure to check the lag-time monitor in the top left corner to ensure real-time broadcasts.

Proxy Bidding-if you can't make time to watch the sale, register a proxy bid and let our system represent your bid while you're away. Look for the "proxy bid" tab on the auction listing, and fill in your maximum bids. We'll handle the rest!

Having troubles? During the auction, you can type a message to the operator at any time for assistance. Our full-time support team can also always be reached at (402) 474-5557.

DVAuction
Empowering Cattle Owners & Auctioneers

DVA Rep. Justin Dikoff (605) 290-0655 - email: jdikoff@dvauction.com
Please feel free to contact me with questions about the sale or to view the cattle for you.

TERMS AND CONDITIONS: This sale is conducted under the standard terms and conditions as adopted by the American Gelbvieh Association. Each animal becomes the buyer's risk as soon as sold. All persons attending the sale do so at their own risk. **Hojer Ranch is not responsible for accidents.**

ACCOMMODATIONS: Dakota Prairie Lodging available at the Ranch.
De Smet Super Deluxe Inn and Suites. 605-854-9388. Call and we can assist.

HERD HEALTH: All bulls and heifers have received 2 rounds of Bovishield Gold One, 2 rounds of Ultrabac-7/Somubac, poured for worms and lice. All bulls will undergo a breeding soundness exam prior to the sale and scrotal circumference measurements will be available March 6th.

BREEDING GUARANTEE: All bulls will have passed breeding soundness exam prior to the sale and are guaranteed breeders (defined as the ability to settle an average number of healthy cows during the first breeding season), with the exception due to injury or disease suffered or occurring after sale. Breeding season is defined by 90 days after turnout. If injury should occur, Hojer Ranch must be notified immediately. We will replace if possible or the buyer will receive a credit (not to exceed the purchase price of the animal), minus salvage value, towards a purchase next year. See page 30 on heifer guarantee.

INSURANCE: Insurance will be available on the day of sale. We strongly encourage all buyers to purchase insurance. See Page 10 for more information!

VIEWING: Bulls and heifers are available for viewing anytime at the ranch. Bulls will be penned by 10:00 AM on the morning of the sale. Videos of all lots are also available on our website, www.hojerranch.com.

DELIVERY: Free delivery of all bulls and heifers within 100 miles. Arrangements can be made to deliver bulls to a central point outside the 100 mile area and costs will be shared. Hojer Ranch will keep bulls free of charge until May 1, 2023. After May 1, 2023, a cost of \$4/hd/d will be charged for feed. Heifers will be kept free of charge until October 1, 2023.

REGISTRATION PAPERS: Registration papers may be transferred upon request after the sale of the bulls. Heifer papers will be transferred after heifers are paid in full (see finance program on page 38).

**All announcements from the block take precedence over all written material.
Hojer Ranch will retain 50% semen interest in all bulls.**

Table of Contents

1. PUREBRED BULLS	Lots 1-55
2. BALANCER BULLS	Lots 56-98
3. FALL BULLS	Lots 99-109
4. PUREBRED HEIFERS	Lots 110-130
5. BALANCER HEIFERS.....	Lots 131-148

GELBVIEH & BALANCER[®] THE CONTINENTAL BREED

OF CHOICE



SMART. RELIABLE. PROFITABLE.

Gelbvieh and Balancer genetics offer more pounds of calf weaned, added fertility, and greater cow herd longevity. GELBVIEH.ORG

Reference Sire Group "CHIEF JUSTICE"

JKGF CHIEF JUSTICE C205

HOMO BLACK • HOMO POLLED • PUREBRED

AGA#: 1325089 • Tattoo: JKGF C205

CAROLINA LEVERAGE 3214A

LAZY TV SAM U451
BELLE OF THE BALL 1309Y

MISS FORTUNE U490

CAROLINA FORTUNE 2564JET
MISS LANDMARK R352

CED	BW	WW	YW	MILK	TM	CEM	CW	RE	MB
14	-1.6	74	119	23	60	8	41	0.48	0.44



What to expect in "CHIEF JUSTICE" progeny?

Every year, we search vigorously for new outcross genetics that meet the standard we set here at Hojer Ranch. Chief Justice checked every box! With a low birth weight and accelerating growth, great maternal potential, and carcass merit in the top tier of the Gelbvieh breed. We just had to give him a try. Well folks, he has proven true! His calves have come small but have showed rapid growth performance. His calves carry superb length and thickness while maintaining a very modern Gelbvieh appearance. We are excited to see what the future holds with Chief Justice at Hojer Ranch!

Reference Sire Group "WHISKEY ECLIPSE"

BNC WHISKEY ECLIPSE D6292

RED • HOMO POLLED • PUREBRED

AGA#: 1351498 • Tattoo: BNC D6292

ECLIPSE A360

ASTRO 407S
MISS HOJER X185

MISS HOJER U8136

ELWAY P182
NIKH R515

CED	BW	WW	YW	MILK	TM	CEM	CW	RE	MB
9	1.6	78	115	32	71	1	39	1.01	0.04



What to expect in "WHISKEY ECLIPSE" progeny?

In 2017, we made the difficult decision to part ways with Whiskey Eclipse. But, he ended up at a great home with Crippled W Cattle Co. We were able to get semen collected and Whiskey Eclipse was immediately implemented into our AI program. Whiskey Eclipse has extreme length of body with overall thickness from front to back, unlike anything we have ever seen. His first progeny have been remarkably consistent. The bulls and females are very structurally correct and truly are the complete package in terms of performance and functionality. Whiskey Eclipse has a very bright future at Hojer Ranch!

Reference Sire Group "CIVIL WAR"

CIVIL WAR E92

HOMO BLACK • HOMO POLLED • BA 50%

AGA#: 1386499 • Tattoo: JKGF E92

VAR DISCOVERY 2240

MYTTY IN FOCUS
DEER VALLEY RITA 0308

LOTTIE C92

BLACK IMPACT 3960N
LOTTIE Y92

CED	BW	WW	YW	MILK	TM	CEM	CW	RE	MB
12	0.3	93	154	18	64	8	55	0.72	0.6



What to expect in "CIVIL WAR" progeny?

We knew it was time to start searching for a different genetic option for people to compliment the Ditka genetics that have been so productive and well received. When we seen JKGF Civil War, we knew he was the one we were going to try. We were ecstatic to see that the Civil War calves maintained the level of performance and overall thickness that the Ditka progeny offered. What we didn't expect was the length of body that Civil War provided. These calves will be stout made with an extra rib of body length! We truly believe that if you had success with Ditka, Civil War will take you the next step further!

Reference Sire Group "DITKA"

JKGF DITKA C85

HOMO BLACK • HOMO POLLED • BA 50%

AGA# 1322576 • Tattoo: JKGF C85

SANDPOINT BUTKUS X797

SAV FINAL ANSWER 0035
GAR GRID MAKER 4603

JKGF LADYBUG A012

HYEK BLACK IMPACT 3960N
JKGF 12U

CED	BW	WW	YW	MILK	TM	CEM	CW	RE	MB
13	-0.6	89	139	22	67	8	42	0.56	-0.10



What to expect in "DITKA" progeny?

Ditka was first introduced in 2019 on a smaller sample scale. Each year since, we continue to be impressed! When it comes to balancer genetics, we have never seen progeny start with such consistently low birth weights, and excel with such rapid growth. These cattle all exhibit great depth of body and tremendous muscling. We have our first Ditka females in production and they are exhibiting great milking capabilities and an unprecedented docile disposition. Take advantage of Ditka genetics this year, and in the future! Even if you are a Pittsburgh Steelers fan!

Reference Sire Group "FINNEGAN"

HILLSDOWN FINNEGAN 4F

RED • HOMO POLLED • PB 94%

CDGV# 165587 • Tattoo: HDG 4F

DL JEN-TY DYNAMITE

FRL FIR RIVER RED CHILLI 451Y
DL JEN-TY CINDY 273U

HDG AVERY 13D

JRI POP A TOP 197T83
HDG BAYLEE 14B

CED	BW	WW	YW	MILK	TM	CEM	CW	RE	MB
21	-3.8	72	106	20	56	11	28	0.80	0.12



What to expect in "FINNEGAN" progeny?

We have had a great ride over the past 20 years showcasing powerful red purebred genetics from the likes of The Judge, Power Max, Astro, Express, and 06A. We knew it was time to broaden our horizons and find that next great Red Purebred Bull to implement into our breeding system. After turning over nearly every stone, we found the bull that we believe will take our program, and yours, to the next level! Introducing Finnegan! We absolutely fell in love with his physical appearance. He is extremely long made and carries great muscle thickness from one end to the other. He adds an element of calving ease that will be new to our program. We have had great success using him on both first calf heifers and cows. We are very excited about Finnegan's future here at Hojer Ranch!

Reference Sire Group "INFERNO"

BNC INFERNO F8115

RED • HOMO POLLED • PB 87%

AGA#: 1422405 • Tattoo: BNC F8115

PMG 06A

FINAL ANSWER W24 ET
POST ROCK WILMA 150S8 ET

MISS HOJER X186

JDPD ASTRO 407S
BNC R530

CED	BW	WW	YW	MILK	TM	CEM	CW	RE	MB
14	-0.5	67	105	18	52	8	38	0.44	0.03



What to expect in "INFERNO" progeny?

From a young age, we could see something special in that F8115 bull calf. He had a style and a physical presence about him that was very uncommon. Once he reached a year of age and began to truly develop, we could see we had something special. Introducing BNC Inferno! Inferno is the result of sheer power and performance (06A) meeting style and precision (Astro). The first couple of calf crops have proven Inferno to deliver a low birth weight to his progeny, but also provide them with above average growth. He adds the style, eye appeal, and substance in his calves. This combination is very hard to find in a purebred herd sire. Get used to seeing the name Inferno in our pedigrees for years to come!

Reference Sire Group "GREAT DIVIDE"

RTRT GREAT DIVIDE 503C

BLACK • HOMO POLLED • PUREBRED

AGA# 1308897 • Tattoo: RTRT 503C

DCH HILLE X102

MILLE M118 MAJESTY
HILLE U279 UNDERCURRENT

DARCI 301A

LAZY TV SAM U451
DARCI 304Y

CED	BW	WW	YW	MILK	TM	CEM	CW	RE	MB
11	0.08	85	127	31	73	7	44	0.83	0.12



Reference Sire Group "ASTRO"

JDPD ASTRO 407S

RED • MULTIPLE POLLED • PUREBRED

AGA#: 977933 • Tattoo: JDPD 407S

JDPD ROLEX 151M

HAD SLEEP TIGHT ET
VTG VISTA MS FREEDOM 0151K

HAD PRINCESS OF ALOT 407P

HAD LANCELOT 795L
HAD 140L

CED	BW	WW	YW	MILK	TM	CEM	CW	RE	MB
11	0.2	65	96	14	51	8	32	0.22	0.22



Reference Sire Group "CLASS ACTION"

BNC CLASS ACTION G915

BLACK • HOMO POLLED • PB 93%

AGA#: 1452560 • Tattoo: BNC G915

JKGF CHIEF JUSTICE C205

CCRO CAROLINA LEVERAGE 3214A
KCF MISS FORTUNE U490

BNC MISS HOJER A356

JDPD ASTRO 407S
BNC S609

CED	BW	WW	YW	MILK	TM	CEM	CW	RE	MB
12	-0.2	75	113	24	62	8	44	0.75	0.44



Reference Sire Group "UNRIVALED"

CKS UNRIVALED G54

BLACK • HOMO POLLED • PB 99%

AGA#: 1458776 • Tattoo: CKS G54

LEGACY E64

DCH HILLE X102
MS UPGRADE A16

MS EASE E57

AT EASE A357
MS HICKORY Y33

CED	BW	WW	YW	MILK	TM	CEM	CW	RE	MB
15	1.2	92	146	35	81	9	55	1.15	0.10



Reference Sire Group "BIG ANDY"

DCH BIG ANDY D672

BLACK • HOMO POLLED • PB 99.9%

AGA# 1356650 • Tattoo: DCH D672

DCH HILLE Y109

DCH HILLE T266 TYE
DCH HILLE W175 WAKE UP

DCH HILLE 4266

BEA 908W
DCH HILLE Y307

CED	BW	WW	YW	MILK	TM	CEM	CW	RE	MB
20	-3.2	75	105	28	65	10	35	0.47	0.04



LOT 2- SON OF BIG ANDY

Reference Sire Group "RAMPAGE"

DDGR RAMPAGE 62E

BLACK • HOMO POLLED • PB 88%

AGA#: 1403748 • Tattoo: DDGR 62E

DDGR NOBLE MAN 79B

NOBILITY 123Y
HOPE 245W

DDGR 9Y

POST ROCK GRANITE 200P2
NAOMI 55W

CED	BW	WW	YW	MILK	TM	CEM	CW	RE	MB
8	3.1	80	125	26	65	5	46	0.76	0.20



Reference Sire Group "EMINENCE"

PHG EMINENCE E02

BLACK • HOMO POLLED • PB 88%

AGA#: 1389102 • Tattoo: PHG E02

BABR DOMINANCE 4280B

CTR SANDHILLS 0065X
BEA CINDY LOU WHO ET

DDN BELLY RIVER AMBER 56A

FLAD FLADELAND DRACULA 57Y
DDN BELLY RIVER RAMONA 5108R

CED	BW	WW	YW	MILK	TM	CEM	CW	RE	MB
12	-1.0	71	101	11	46	5	38	0.35	0.43



Reference Sire Group "DEEP END"

DEEP END 577F ET

RED • HOMO POLLED • BA 50%

AGA#: 1448997 • Tattoo: FHG 577F

BIEBER DEEP END B597

BEIBER ROLLIN DEEP Y118
RAB BEIBER LAURA 158W

FLYING H MS 51P 171Y

FHG FLYING H LANDMARK 051P
LDJ MS GERANIUM T522

CED	BW	WW	YW	MILK	TM	CEM	CW	RE	MB
15	0.0	90	138	24	69	8	52	0.78	0.43



SIRE OF DEEP END

Black Purebred Bulls (LOTS 1-37)

1 BNC MR. HOJER J209

BLACK • MULTIPLE POLLED • PB 94%

AGA# 1543412 • Tattoo: BNC J209

CKS UNRIVALED G54

CKS LEGACY E64
CKS MS EASE E57

BNC MISS HOJER H0124

BNC HEADLINE C5155
BNC MISS HOJER U8134

WINTER YEARLING

BD	12/29/21
BW	63
WW	633
YW	1255
ADJ	3.9
REA EPD	0.87
IMF EPD	0.15

CED	BW	WW	YW	MILK	TM	CEM
14	0.9	77	118	32	70	7

Lot 1 is a twin out of a first calf heifer. She raised both so I would say she did an outstanding job! Don't discriminate against this guy for having to share his young momma with a sibling. Lots of stretch with this guy and he is still growing! Top of the breed for growth and milk!

2 BNC MR. HOJER J212

BLACK • HOMO POLLED • PB 88%

AGA# 1543414 • Tattoo: BNC J212

DCH BIG ANDY D672

DCH HILLE Y109
DCH HILLE 4266

BNC MISS HOJER H066

BNC WHISKEY ECLIPSE D6292
BNC MISS HOJER W919

WINTER YEARLING

BD	12/30/21
BW	75
WW	781
YW	1407
ADJ	3.9
REA EPD	0.65
IMF EPD	0.15

CED	BW	WW	YW	MILK	TM	CEM
14	-1.0	85	125	30	72	6

GENOMIC ENHANCED EPDs HUGE opportunity here! Lot 2 is not only one of our highest performers of the year, but he put together an EPD profile better than almost anything you will find out there! He is the perfect blend of calving ease and growth. We will be collecting this guy for in herd use. Check out the video of this guy. We feel the picture doesn't do him justice. This is a big time Herd Bull Prospect!

3 BNC MR. HOJER K219

HOMO BLACK • HOMO POLLED • PB 94%

AGA# 1543420 • Tattoo: BNC K219

PHG EMINENCE E02

BABR DOMINANCE 4280B
DDN BELLY RIVER AMBER 56A

THUL A342

BNC CADILLAC JACK T717
THUL WILD FIRE

WINTER YEARLING

BD	1/1/22
BW	86
WW	677
YW	1236
ADJ	3.5
REA EPD	0.48
IMF EPD	0.40

CED	BW	WW	YW	MILK	TM	CEM
8	0.7	76	104	17	55	4

GENOMIC ENHANCED EPDs Check out these new outcross genetics. The good old A342 cow really left her stamp on this guy. By that I mean FRAME! Lot 3 will really put some added size on a set of calves. Frame equals pounds and pounds mean more dollars in your pocket!! Take advantage of the HOMO Black also!



LOT 5

BULL INSURANCE

Hojer Gelbvieh Ranch is willing to "invest" in your operation by cost/sharing this cost in an effort to help you manage your risk and maximize the investment that you are making on March 6th!



LOT 2

4 BNC MR. HOJER K220

BLACK • MULTIPLE POLLED • PB 94%

AGA# 1543421 • Tattoo: BNC K220

EGL ENCORE E7166

JOB DANELL TD CHICO LOCO 28Y
GRU MS ASTRO 298Z

BNC MISS HOJER D6449

CRAN DREAM ON Y054
BNC MISS HOJER C592

WINTER YEARLING

BD	1/2/22
BW	87
WW	689
YW	1386
ADJ	4.4
REA EPD	0.53
IMF EPD	0.16

CED	BW	WW	YW	MILK	TM	CEM
10	1.1	72	107	23	58	5

The D6449 cow produced our highest gainer in our 2022 bull sale. Well she almost did it again. Lot 4 just exploded after weaning. He was always a larger frame calf but he really filled out nicely as he matured. If you are wanting to add some stretch and size to your calves, mark this guy down!

5 BNC MR. HOJER K225

BLACK • HOMO POLLED • PB 99.9%

AGA# 1543426 • Tattoo: BNC K225

DCH BIG ANDY D672

DCH HILLE Y109
DCH HILLE 4266

BNC MISS HOJER H040

JKGF CHIEF JUSTICE C205
BEA BEA 2072Z

WINTER YEARLING

BD	1/4/22
BW	76
WW	737
YW	1404
ADJ	4.2
REA EPD	0.51
IMF EPD	0.28

CED	BW	WW	YW	MILK	TM	CEM
16	-0.4	80	118	24	64	8

GENOMIC ENHANCED EPDs Talk about a crazy spread! 76 lb birth to a 1400 lb yearling weight! These Big Andy sons have been so impressive. Lot 5 could be used on heifers. The calves will come small but man oh man will they grow! He is out of a first calf Chief Justice heifer. You most likely won't find this combination of genetics anywhere else!

6

BNC MR. HOJER K227**BLACK • MULTIPLE POLLED • PB 94%**

AGA# 1543428 • Tattoo: BNC K227

EGL ENCORE E7166JOB DANELL TD CHICO LOCO 28Y
GRU MS ASTRO 298Z**BNC MISS HOJER G9139**RTRT GREAT DIVIDE 503C
BNC MISS HOJER U8136**WINTER YEARLING**

BD	1/4/22
BW	84
WW	740
YW	1378
ADJ	4.0
REA EPD	0.82
IMF EPD	0.17

CED	BW	WW	YW	MILK	TM	CEM
10	2.3	82	119	23	64	4

Whenever I see U8136 in a pedigree, I know I'm going to be looking at a dang good animal. She is the dam of Whiskey Eclipse and the females she has left us with just flat produce! K227 has great depth of body and length and boast a 119 YW EPD! Here is a performance package!



BLACK PUREBRED BULLS

7

BNC MR. HOJER K228**BLACK • HOMO POLLED • PB 85%**

AGA# 1543429 • Tattoo: BNC K228

CKS UNRIVALED G54CKS LEGACY E64
CKS MS EASE E57**BNC MISS HOJER H0156**JEMG SILVER DOLLAR Z645
BNC MISS HOJER Y074**WINTER YEARLING**

BD	1/4/22
BW	79
WW	695
YW	1324
ADJ	3.9
REA EPD	1.22
IMF EPD	0.19

CED	BW	WW	YW	MILK	TM	CEM
12	1.5	82	131	27	68	7

GENOMIC ENHANCED EPDs If you have a set of soggy middled Angus base cows, Lot 7 would be a great choice to breed them to! He is one of our larger framed bulls in the offering. There is no question he would produce an impressive set of F1 cross calves!

10

BNC MR. HOJER K260**BLACK • MULTIPLE POLLED • PB 99.9%**

AGA# 1543459 • Tattoo: BNC K260

WOAK REVOLUTION 08TKCF BENNETT KINGPIN K403
RLBG TAMARA N006**BNC MISS HOJER E796**JEMG SILVER DOLLAR Z645
BNC MISS HOJER W915**WINTER YEARLING**

BD	1/15/22
BW	82
WW	634
YW	1099
ADJ	2.9
REA EPD	0.53
IMF EPD	0.34

CED	BW	WW	YW	MILK	TM	CEM
11	1.2	70	99	23	58	6

If you're needing to add some guts to your calves, Lot 10 needs to be on your list! Adding rib shape is one of Revolution's and Silver Dollar's greatest attributes.

8

BNC MR. HOJER K241**BLACK • HOMO POLLED • PB 94%**

AGA# 1543442 • Tattoo: BNC K241

EGL ENCORE E7166JOB DANELL TD CHICO LOCO 28Y
GRU MS ASTRO 298Z**BNC MISS HOJER C5342**WOAK REVOLUTION 08T
FMH 2020 RUBY 0596W1 ET**WINTER YEARLING**

BD	1/9/22
BW	82
WW	678
YW	1283
ADJ	3.8
REA EPD	0.65
IMF EPD	0.32

CED	BW	WW	YW	MILK	TM	CEM
13	-0.6	68	103	20	54	4

GENOMIC ENHANCED EPDs Top Herdsire Prospect!! This guy is a super impressive package. His overall thickness and width of top is definitely to be admired. His dam is one I would consider one of our top 10 cows on the ranch. This guy packs all this power into a fairly moderate frame. I also love his eye appeal. You won't find many purebred bulls that are put together this well. Be sure you circle him twice!



9

BNC MR. HOJER K243**BLACK • HOMO POLLED • PB 94%**

AGA# 1543444 • Tattoo: BNC K243

EGL ENCORE E7166JOB DANELL TD CHICO LOCO 28Y
GRU MS ASTRO 298Z**BNC MISS HOJER G927**HYEK BLACK IMPACT 3906N
BNC MS HOJER Z242**WINTER YEARLING**

BD	1/9/22
BW	83
WW	684
YW	1305
ADJ	3.9
REA EPD	0.74
IMF EPD	0.09

CED	BW	WW	YW	MILK	TM	CEM
9	2.2	75	110	19	57	2

GENOMIC ENHANCED EPDs Check out the middle and rear quarter on this guy! If I could find a way to put that butt on every bull I would! His dam is a young Black Impact daughter and they seem to kick out a great calf every year. Very good bull with a ribeye in the top 25% of the breed!



11 BNC MR. HOJER K261

BLACK • SCURRED • PB 90%

AGA# 1543460 • Tattoo: BNC K261

HTFM MR EQUALIZER E711

CCRO CAROLINA LEVERAGE 3214A
HTFM MS CHEYENNE C518

BNC MISS HOJER C608

JDPD ASTRO 407S
MKT 1527

WINTER YEARLING

BD	1/15/22
BW	81
WW	717
YW	1325
ADJ	3.8
REA EPD	0.55
IMF EPD	0.41

CED	BW	WW	YW	MILK	TM	CEM
12	0.6	81	122	24	64	7

GENOMIC ENHANCED EPDs Here is a very eye appealing and stylish Purebred bull. The combination of the former National Champion Equalizer and an Astro dam really worked its magic. This guy has tremendous growth as well with a 1325 yearling weight along with a 122 YW EPD!



12 BNC MR. HOJER K282

BLACK • MULTIPLE POLLED • PB 99.9%

AGA# 1543480 • Tattoo: BNC K282

WOAK REVOLUTION 08T

KCF BENNETT KINGPIN K403
RLBG TAMARA N006

BNC MISS HOJER G994

JKGF CHIEF JUSTICE C205
BNC MISS HOJER C5225

WINTER YEARLING

BD	1/21/22
BW	80
WW	643
YW	1242
ADJ	3.8
REA EPD	0.52
IMF EPD	0.39

CED	BW	WW	YW	MILK	TM	CEM
11	1.1	66	100	25	58	6

The carcass merit from Chief Justice is really shining through on Lot 12! Top 10% of the breed for Marbling! If you're looking for a very high percentage purebred bull to add to your crossbreeding system and produce calves that will perform on the rail, K282 would be a great fit!

15 BNC MR. HOJER K296

BLACK • MULTIPLE POLLED • PB 94%

AGA# 1543489 • Tattoo: BNC K296

PHG EMINENCE E02

BABR DOMINANCE 4280B
DDN BELLY RIVER AMBER 56A

BNC MISS HOJER B4132

BNC RAISING THE BAR X140
BNC MISS HOJER Y076

WINTER YEARLING

BD	1/27/22
BW	78
WW	632
YW	1262
ADJ	3.9
REA EPD	0.60
IMF EPD	0.29

CED	BW	WW	YW	MILK	TM	CEM
12	-0.3	70	100	19	54	6

Lot 15 is what I would call a Meat Wagon! I mean just look at this guy. I swear he is about as wide as he is tall! All that power and performance and he is still way about average for birth weight with a -0.3. This guy checks all the boxes. The B4132 cow has produced several top notch bulls over the years and she ain't done yet it appears!

13 BNC MR. HOJER K288

HOMO BLACK • MULTI POLLED • PB 99.9%

AGA# 1547718 • Tattoo: BNC K288

BNC CLASS ACTION G915

JKGF CHIEF JUSTICE C205
BNC MISS HOJER A356

BNC MISS HOJER F8301

RTRT GREAT DIVIDE 503C
BNC MISS HOJER D6449

WINTER YEARLING

BD	1/25/22
BW	81
WW	673
YW	1242
ADJ	3.6
REA EPD	0.65
IMF EPD	0.28

CED	BW	WW	YW	MILK	TM	CEM
10	0.4	72	109	27	63	7

GENOMIC ENHANCED EPDs We had a very good response towards the Class Action calves last year and you are sure to love Lot 13 this year. These Class Action sons seem to be built with a little extra bone in them. This guy is wide topped and carries uniform thickness from front to back. Another thing we are learning is that Class Action puts some very strong maternal traits into his offspring.

16 BNC MR. HOJER K2108

BLACK • MULTIPLE POLLED • PB 92%

AGA# 1543499 • Tattoo: BNC K2108

CKS UNRIVALED G54

CKS LEGACY E64
CKS MS EASE E57

BNC MISS HOJER E7365

RID R COLLATERAL 2R
BNC MISS HOJER A400

WINTER YEARLING

BD	1/30/22
BW	68
WW	488
YW	1191
ADJ	4.4
REA EPD	0.73
IMF EPD	0.20

CED	BW	WW	YW	MILK	TM	CEM
11	1.5	78	120	25	64	6

We had several sets of twins last year and Lot 16 is another one. Just look what he did since weaning! He put on 700 pounds. We don't pull twins here, the cow is expected to handle them both. This is a good growthy bull that is just now hitting his stride!

14 BNC MR. HOJER K293

BLACK • MULTIPLE POLLED • PB 94%

AGA# 1550613 • Tattoo: BNC K293

BNC CLASS ACTION G915

JKGF CHIEF JUSTICE C205
BNC MISS HOJER A356

BNC MISS HOJER F8340

BNC EXPRESS B4154
BNC MISS HOJER Z307

WINTER YEARLING

BD	1/27/22
BW	70
WW	673
YW	1270
ADJ	3.7
REA EPD	0.62
IMF EPD	0.29

CED	BW	WW	YW	MILK	TM	CEM
11	-0.3	72	109	24	60	8

Everything I just stated about Lot 13 I can copy and paste for Lot 14. These two are virtually identical! Ha! I just noticed they have the exact same weaning weight. That's kind of crazy! If you retain your own replacement heifers, you should take a serious look at this guy. If you go back far enough, you'll find Astro on both sides of the pedigree. The means Female maker!

17 BNC MR. HOJER K2126

HOMO BLACK • MULTI POLLED • PB 90%

AGA# 1543515 • Tattoo: BNC K2126

HTFM MR EQUALIZER E711

CCRO CAROLINA LEVERAGE 3214A
HTFM MS CHEYENNE C518

BNC MISS HOJER U8174

ACGC AMERICAN IDEAL 309N
BNC N361

WINTER YEARLING

BD	2/7/22
BW	77
WW	621
YW	1343
ADJ	4.5
REA EPD	0.92
IMF EPD	0.10

CED	BW	WW	YW	MILK	TM	CEM
9	1.2	87	128	23	67	6

GENOMIC ENHANCED EPDs If I were to have told you this calf lost his mom at 2 months of age and he still posted a 621 weaning and 1343 yearling weight, I don't think you would believe me! Well take my word for it that's exactly what happened. In her prime, U8174 was one of our best cows. Take advantage of her last calf. She was the last American Ideal cow we had.

18 BNC MR. HOJER K2128

BLACK • MULTIPLE POLLED • PB 99.9%

AGA# 1543517 • Tattoo: BNC K2128

JKGF CHIEF JUSTICE C205 CCRO CAROLINA LEVERAGE 3214A
KCF MISS FORTUNE U490

BNC MISS HOJER B471 JDPD ASTRO 407S
BNC MISS HOJER X1128

WINTER YEARLING

BD	2/8/22
BW	71
WW	575
YW	1199
ADJ	3.9
REA EPD	0.66
IMF EPD	0.33

CED	BW	WW	YW	MILK	TM	CEM
14	-2.3	59	91	23	52	8

As far as heifer bull prospects in this years sale, Lot 18 is one of my favorites!! The very consistent B471 cow and Chief Justice have produced this "Don't Lose any sleep at night" bull. -2.3 BW puts him in the top 10% of the breed. Put this dude on your heifers and he will take great care of them!

19 BNC MR. HOJER K2129

BLACK • HOMO POLLED • PB 99.9%

AGA# 1543518 • Tattoo: BNC K2129

RTRT GREAT DIVIDE 503C DCH HILLE X102
RTRT DARCI 301A

BNC MISS HOJER F902 HYEK BLACK IMPACT 3690N
BNC MISS HOJER D704

WINTER YEARLING

BD	2/8/22
BW	75
WW	841
YW	1482
ADJ	4.0
REA EPD	0.56
IMF EPD	0.01

CED	BW	WW	YW	MILK	TM	CEM
12	0.8	89	124	30	74	6

GENOMIC ENHANCED EPDs Top Herdsire Prospect!! This guy is hands down our best overall Great Divide son we have raised. He has been a head turner since birth. The mass and power this guy has is extremely rare. Huge weaning at 841 lbs and just shy of 1500 lb yearling. This guy has a huge future ahead of him and has the potential of making an impact on the Gelbvieh breed! Be sure to check Lot 19 out on March 6!

20 BNC MR. HOJER K2137

BLACK • MULTIPLE POLLED • PB 90%

AGA# 1543524 • Tattoo: BNC K2137

CKS UNRIVALED G54 CKS LEGACY E64
CKS MS EASE E57

BNC MISS HOJER H0125 BNC SILVER INVESTMENT E7192
BNC MISS HOJER D6180

WINTER YEARLING

BD	2/20/22
BW	78
WW	601
YW	1390
ADJ	4.9
REA EPD	0.85
IMF EPD	0.16

CED	BW	WW	YW	MILK	TM	CEM
12	1.4	81	125	29	69	7

There is beginning to be a pattern with the Unrivaled calves. Low birth weight eventually big time growth. That is exactly how Unrivaled himself was. They will be bigger framed cattle once they get some age on them. Just look at his 1390 lb yearling weight! If you finish your cattle you should really take note. That's a lot of pounds for the packer to buy!



LOT 22

In Case of Inclement Weather Call:

Alan's Cell: (605) 860-1326

Blake's Cell: (605) 860-0139

Christian's Cell: (605) 860-8635

BLACK PUREBRED BULLS



LOT 19

21 BNC MR. HOJER K2142

BLACK • MULTIPLE POLLED • PB 91%

AGA# 1543529 • Tattoo: BNC K2142

RTRT GREAT DIVIDE 503C DCH HILLE X102
RTRT DARCI 301A

BNC MISS HOJER C624 DVE DAVIDSON CASSANOVA
BNC MISS HOJER X191

WINTER YEARLING

BD	2/23/22
BW	79
WW	601
YW	1381
ADJ	4.9
REA EPD	0.70
IMF EPD	0.21

CED	BW	WW	YW	MILK	TM	CEM
12	0.0	74	109	27	64	6

If there is one thing Cassanova was good for, it was stretching things way out! Looking at Lot 21, that is the first thing that is glaringly obvious. He is as long as a train. All that length helped him hit 1381 at 365 days. Pretty impressive, and a .70 ribeye to go with it!

22 BNC MR. HOJER K2144

BLACK • MULTIPLE POLLED • PB 91%

AGA# 1543531 • Tattoo: BNC K2144

BNC DAY DREAM E7340 CRAN DREAM ON Y054
BNC MISS HOJER D661

BNC MISS HOJER G990 PMG 06A
BNC MISS HOJER C552

WINTER YEARLING

BD	2/23/22
BW	84
WW	626
YW	1488
ADJ	5.4
REA EPD	0.51
IMF EPD	0.17

CED	BW	WW	YW	MILK	TM	CEM
9	1.9	72	108	22	58	5

Take Notice Everyone! K2144 was always a decent calf, but he has catapulted himself to one of my favorites in the entire offering. I believe you will see some drought effects on a handful of bulls this year. Some of our pastures were in very tough shape. This guy for example this guy had an average weaning weight but then exploded to one of the top yearling weights. This guy is a stud! Be sure to find him March 6!

23 BNC MR. HOJER K2149

BLACK • MULTIPLE POLLED • PB 94%

AGA# 1543536 • Tattoo: BNC K2149

BNC INFERNO F8115 PMG 06A
BNC MISS HOJER X186
BNC MISS HOJER E7175ET JDPD ASTRO 407S
BNC MISS HOJER T7148

WINTER YEARLING

BD	2/28/22
BW	82
WW	585
YW	1337
ADJ	4.7
REA EPD	0.52
IMF EPD	0.10

CED	BW	WW	YW	MILK	TM	CEM
12	0.2	65	99	21	53	8

BNC Inferno is a walking Herd Sire here at the ranch. You all are about to see a heavy dose of progeny in the coming years! Lot 23 is a low birth to high growth bull out of one of the only ET Females we have on the place. This guy is going to have some good frame size once he's mature. Big time yearling at 1337!!

24 BNC MR. HOJER K2161

BLACK • MULTIPLE POLLED • PB 94%

AGA# 1546783 • Tattoo: BNC K2161

BNC INFERNO F8115 PMG 06A
BNC MISS HOJER X186
BNC MISS HOJER C5169 JMDS FREIGHTLINER
BNC MISS HOJER Y094

SPRING YEARLING

BD	3/3/22
BW	78
WW	539
YW	1096
ADJ	3.5
REA EPD	0.51
IMF EPD	0.09

CED	BW	WW	YW	MILK	TM	CEM
12	-0.3	62	94	17	48	7

Here is another Heifer bull specialist guys! You can just tell by looking at Lot 24 with his small head and smooth narrow front shoulders that he is going to treat your first calf heifers right! With a -0.3 on BW, you'll be able to have a smooth calving season!

25 BNC MR. HOJER K2168

BLACK • MULTIPLE POLLED • PB 86%

AGA# 1546788 • Tattoo: BNC K2168

BNC DAY DREAM E7340 CRAN DREAM ON Y054
BNC MISS HOJER D661
BNC MISS HOJER F8316 BNC EXPRESS B4154
BNC MISS HOJER C613

SPRING YEARLING

BD	3/4/22
BW	80
WW	552
YW	1125
ADJ	3.6
REA EPD	0.60
IMF EPD	0.26

CED	BW	WW	YW	MILK	TM	CEM
9	1.8	69	104	21	56	6

You will find a great balance of overall length and thickness in Lot 25. I absolutely love his dam. She is a larger framed stout female. If you are needing a purebred bull that checks a lot of boxes and does a lot of things well, take a look at Lot 25.

26 BNC MR. HOJER K2174

BLACK • MULTIPLE POLLED • PB 94%

AGA# 1546793 • Tattoo: BNC K2174

RTRT GREAT DIVIDE 503C DCH HILLE X102
RTRT DARCI 301A
BNC MISS HOJER E756 SGRI LANGFORD Z761
FMH HAYEK MISS SAM

SPRING YEARLING

BD	3/5/22
BW	73
WW	553
YW	1190
ADJ	4.0
REA EPD	0.70
IMF EPD	0.20

CED	BW	WW	YW	MILK	TM	CEM
14	-1.9	70	105	28	63	8

5 Star calving ease bull here! We don't have too many of these Langford females around but man do I wish we had more. We bought Langford on Schroeder Gelbvieh's dispersal sale back in 2016 and used him for a few years. The females are some of our best calving ease producers. Top 10% for CE!! Let Lot 26 do the work for you!

27 BNC MR. HOJER K2175

BLACK • SCURRED • PB 92%

AGA# 1546794 • Tattoo: BNC K2175

BNC DAY DREAM E7340 CRAN DREAM ON Y054
BNC MISS HOJER D661
BNC MISS HOJER G913 RTRT GREAT DIVIDE 503C
BNC MISS HOJER E780

SPRING YEARLING

BD	3/6/22
BW	72
WW	704
YW	1384
ADJ	4.3
REA EPD	0.64
IMF EPD	0.22

CED	BW	WW	YW	MILK	TM	CEM
11	0.7	72	109	25	62	7

Holy Depth of body on Lot 27! This right here is exactly what I would expect to see out of a Great Divide female crossed with Day Dream. He is big boned and has a ton of rib shape! Great actual performance as well with a 704 actual weaning and 1384 yearling to go with a low birth weight. This guy got it done on both ends! Look him up on March 6!!

28 BNC MR. HOJER K2190

BLACK • MULTIPLE POLLED • PB 94%

AGA# 1549109 • Tattoo: BNC K2190

RTRT GREAT DIVIDE 503C DCH HILLE X102
RTRT DARCI 301A
BNC MISS HOJER G971 JKGF CHIEF JUSTICE C205
BNC MISS HOJER A3308

SPRING YEARLING

BD	3/13/22
BW	78
WW	538
YW	1162
ADJ	3.9
REA EPD	0.70
IMF EPD	0.25

CED	BW	WW	YW	MILK	TM	CEM
11	0.0	70	106	27	61	6

I absolutely love these young Chief Justice females in our herd. They bring the perfect blend of calving ease and growth, as well as some great carcass qualities. You will find a little bit of everything in Lot 28. He is a very multi use bull!

29 HOJ HOJER CATTLE K219

BLACK • MULTIPLE POLLED • PB 94%

AGA# 1548065 • Tattoo: HOJ K219

BNC PAYCHECK E7242 JEMG SILVER DOLLAR Z645
BNC S631
BNC MISS HOJER G9239 RTRT GREAT DIVIDE 503C
AHN 61Z

SPRING YEARLING

BD	3/15/22
BW	84
WW	896
YW	1322
ADJ	2.7
REA EPD	0.84
IMF EPD	0.14

CED	BW	WW	YW	MILK	TM	CEM
10	2.8	79	118	23	63	6

K219 brings a lot of what we saw in his dam's half brother, but with more guts and depth! G9239 is out of the same dam of the now deceased, her sire BNC Express. K219 brings the same amount of length, width, and performance that made us keep Express years ago, but then has the depth that will add pounds to his calves.

30 BNC MR. HOJER K2196

HOMO BLACK • MULTI POLLED • PB 99.9%

AGA# 1549115 • Tattoo: BNC K2196

BNC DAY DREAM E7340 CRAN DREAM ON Y054
BNC MISS HOJER D661
BNC MISS HOJER G9103 JKGF CHIEF JUSTICE C205
BNC MISS HOJER C590

SPRING YEARLING

BD	3/16/22
BW	76
WW	559
YW	1255
ADJ	4.4
REA EPD	0.70
IMF EPD	0.29

CED	BW	WW	YW	MILK	TM	CEM
12	0.3	67	103	23	56	7

A guy like Lot 30 would be a great fit in a cross breeding setting. He is a very high percentage purebred and brings a low 76 lb birth weight with a nice yearling weight at 1255. If you want to maximize your heterosis, the 99.9% purebred will do the trick!

31 BNC MR. HOJER K2197

BLACK • MULTIPLE POLLED • PB 94%

AGA# 1549116 • Tattoo: BNC K2197

DDGR RAMPAGE 62E DDGR NOBLE MAN 79B
DDGR 9Y

BNC MISS HOJER X005 JDPD ASTRO 407S
BNC MISS HOJER W993

SPRING YEARLING

BD	3/17/22
BW	83
WW	569
YW	1270
ADJ	4.4
REA EPD	0.57
IMF EPD	0.19

CED	BW	WW	YW	MILK	TM	CEM
10	1.1	64	99	25	57	6

This Rampage/Astro combination has worked so well over the years. Rampage will bring some added frame size and performance, while the Astro female will bring some style and eye appeal. Lot 31 is a perfect combination of both. Take advantage of these Rampage genetics because there will not be many more in the future!

32 HOJ HOJER CATTLE K225

BLACK • MULTIPLE POLLED • PB 92%

AGA# 1543805 • Tattoo: HOJ K225

BNC PAYCHECK E7242 JEMG SILVER DOLLAR Z645
BNC S631

BNC MISS HOJER E775 JMDS FREIGHTLINER
BNC MISS HOJER U827

SPRING YEARLING

BD	3/17/22
BW	78
WW	830
YW	1253
ADJ	4.23
REA EPD	0.77
IMF EPD	0.17

CED	BW	WW	YW	MILK	TM	CEM
12	1.0	65	94	20	52	9

Eyes forward here! At Hojer Cattle Company, we have put an emphasis on producing good cattle that will meet any program's needs, as well as a big emphasis on disposition. K225 has been a standout since he was born—long bodied, clean fronted, smooth shouldered, plenty of depth and rib shape, calmer than a house cat, and has a WW of 830 and a YW of 1253!

33 BNC MR. HOJER K2205

BLACK • HOMO POLLED • PB 86%

AGA# 1549124 • Tattoo: BNC K2205

DDGR RAMPAGE 62E DDGR NOBLE MAN 79B
DDGR 9Y

BNC MISS HOJER D6467 VRT LAZY TV SAM U451
BNC MISS HOJER B511

SPRING YEARLING

BD	3/19/22
BW	84
WW	772
YW	1150
ADJ	2.4
REA EPD	1.13
IMF EPD	0.28

CED	BW	WW	YW	MILK	TM	CEM
9	3.0	90	134	26	70	5

GENOMIC ENHANCED EPDs Just look at this guy's numbers and picture! He is exactly what to expect from a Rampage son! Large frame and stretch with big time performance. 772 pounds at weaning and a whopping 134 YW EPD! This Rampage son hit the ground and hasn't stopped growing yet. Just think what his progeny will do!

34 BNC MR. HOJER K2208

BLACK • MULTIPLE POLLED • PB 91%

AGA# 1549127 • Tattoo: BNC K2208

RTTR GREAT DIVIDE 503C DCH HILLE X102
RTTR DARCI 301A

BNC MISS HOJER D639 HAD THE JUDGE ET
BNC MISS HOJER A3278

SPRING YEARLING

BD	3/20/22
BW	85
WW	771
YW	1347
ADJ	3.6
REA EPD	0.81
IMF EPD	0.20

CED	BW	WW	YW	MILK	TM	CEM
10	2.3	87	126	25	69	6

I tell you what, for a younger calf in our offering, this guy has stood out all summer on pasture. And looking at his pedigree it should really come as no surprise. He is out of one of our few remaining Judge females. He is extremely thick made just like The Judge was and will be a great female maker just like his grand sire was! 126 YW EPD!!

35 BNC MR. HOJER K2210

BLACK • MULTIPLE POLLED • PB 92%

AGA# 1549128 • Tattoo: BNC K2210

BNC DAY DREAM E7340 CRAN DREAM ON Y054
BNC MISS HOJER D661

BNC MISS HOJER F8121 JMDS FREIGHTLINER
BNC MISS HOJER A3298

SPRING YEARLING

BD	3/21/22
BW	78
WW	683
YW	1275
ADJ	3.5
REA EPD	0.65
IMF EPD	0.24

CED	BW	WW	YW	MILK	TM	CEM
11	1.6	73	107	24	61	7

Here is a very attractive looking Day Dream son out of a Freightliner daughter. If there is one thing that is a constant around here, it is that Freightliner daughters are big time producers. This guy weaned off at 683 pounds which ratios 112 in his contemporary group. Now that is impressive!



BLACK PUREBRED BULLS

36 BNC MR. HOJER K2225

HOMO BLACK • MULTI POLLED • PB 94%

AGA# 1550489 • Tattoo: BNC K2225

CKS UNRIVALED G54 CKS LEGACY E64
CKS MS EASE E57

BNC MISS HOJER G9283 BNC HEADLINE C5155
BNC MISS HOJER C592

CED	BW	WW	YW	MILK	TM	CEM
12	-1.5	69	99	34	68	7

SPRING YEARLING

BD	3/28/22
BW	73
WW	826
YW	1352
ADJ	3.9
REA EPD	0.87
IMF EPD	0.08

GENOMIC ENHANCED EPDs Man there is a pile of things to love about Lot 36! For starters he is HOMO Black! Then lets look at his scale busting 826 pound weaning weight! Oh and to top things off, he is top 10% of the breed from BW with a -1.5! This guy can absolutely do it all! He should be on everyone's short list.

37 BNC MR. HOJER K2243

BLACK • MULTIPLE POLLED • PB 94%

AGA# 1550504 • Tattoo: BNC K2243

RTRT GREAT DIVIDE 503C DCH HILLE X102
RTRT DARCI 301A

BNC MISS HOJER B4348 BNC MR ELROY Y034
BNC MISS HOJER T719

CED	BW	WW	YW	MILK	TM	CEM
13	-1.4	71	104	28	64	8

SPRING YEARLING

BD	4/12/22
BW	68
WW	736
YW	1305
ADJ	3.8
REA EPD	0.49
IMF EPD	0.18

We don't get too many Great Divide sons that I would label as safe for heifers. Lot 37 is an exception. His 9 year old Elroy cow is a calving ease dream. What I like about this calf is the calves will come small but because of his sire, the calves will have some substance to them. This guy certainly has some versatility on where you could use him!

Red Purebred Bulls (LOTS 38-55)

38 BNC MR. HOJER J216

RED • HOMO POLLED • PB 88%

AGA# 1543417 • Tattoo: BNC J216

PHG EMINENCE E02 BABR DOMINANCE 4280B
DDN BELLY RIVER AMBER 56A

BNC MISS HOJER G9306 DDGR RAMPAGE 62E
BNC MISS HOJER D6483

CED	BW	WW	YW	MILK	TM	CEM
10	-0.1	67	96	18	52	4

WINTER YEARLING

BD	12/31/21
BW	79
WW	690
YW	1210
ADJ	3.3
REA EPD	0.39
IMF EPD	0.32

GENOMIC ENHANCED EPDs This bull is getting a great deal of attributes from his maternal grandsire. He has a tremendous amount of length that he most definitely gets from Rampage. Another attractive element is he is top 20% in the breed for Marbling. That is a rare commodity in a red purebred package. Red buyers be sure to check this one out in the pens!

39 BNC MR. HOJER K226

RED • HOMO POLLED • PB 99.9%

AGA# 1543427 • Tattoo: BNC K226

HDG HILLSDOWN FINNEGAN 4F DL JEN-TY DYNAMITE
HDG AVERY 13D

BNS MISS HOJER E7234 BNC EXPRESS B4154
BNC MISS HOJER T729

CED	BW	WW	YW	MILK	TM	CEM
14	-0.1	71	105	19	55	9

WINTER YEARLING

BD	1/4/22
BW	85
WW	663
YW	1218
ADJ	3.5
REA EPD	0.67
IMF EPD	0.01

GENOMIC ENHANCED EPDs I was super excited when E7234 had a bull calf last January. She is hands down my favorite Express daughter and up until this point has produced mostly heifer calves in which most have been retained in the herd. Lot 39 has that beautiful dark cherry red coat color and has a great combination of calving ease and performance.

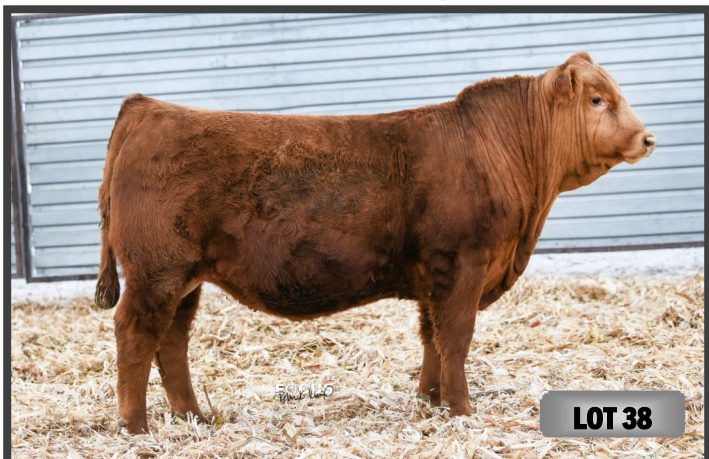


AVAILABLE FOR VIEWING

Bulls and heifers are available for viewing anytime at the ranch.

The bulls will be penned by 10 am the morning of the sale.

Videos of all lots are also available on our website,
hojerranch.com.



40 BNC MR. HOJER K245

RED • HOMO POLLED • PB 88%

AGA# 1543446 • Tattoo: BNC K245

BNC WHISKEY ECLIPSE D6292 BNC ECLIPSE A360
BNC MISS HOJER U8136
BNC Z2238 BNC POWER MAX U812
MKT 1524

WINTER YEARLING

BD	1/10/22
BW	86
WW	735
YW	1410
ADJ	4.2
REA EPD	0.84
IMF EPD	0.17

CED	BW	WW	YW	MILK	TM	CEM
4	1.5	74	109	35	72	0

GENOMIC ENHANCED EPDs Last year when long time friend Rick Bauer showed up to see the bulls, he spotted Lot 40's full brother and knew instantly that was the bull he wanted. Well folks here is round two for this genetic combination. Absolute powerhouse bull here. The pounds will add up in a real hurry when you use this guy. Take advantage because this will likely be the last bull produced by this extraordinary cow!

41 BNC MR. HOJER K251

RED • HOMO POLLED • PB 99.9%

AGA# 1543451 • Tattoo: BNC K251

HDG HILLSDOWN FINNEGAN 4F DL JEN-TY DYNAMITE
HDG AVERY 13D
BNC MISS HOJER F8325 BNC EXPRESS B4154
BNC MISS HOJER B525

WINTER YEARLING

BD	1/13/22
BW	80
WW	706
YW	1298
ADJ	3.7
REA EPD	0.94
IMF EPD	0.04

CED	BW	WW	YW	MILK	TM	CEM
11	0.1	74	117	21	58	6

GENOMIC ENHANCED EPDs Lot 41 is perhaps my favorite of the Finnegan calves this year. He has a great middle third and follows that up with an impressive rear quarter. I am excited to inject more Finnegan bloodline into the herd because he seems to cross very well with many of our powerful red females. You all need to find this guy on March 6!

42 BNC MR. HOJER K267

RED • HOMO POLLED • PB 94%

AGA# 1543466 • Tattoo: BNC K267

PHG EMINENCE E02 BABR DOMINANCE 4280B
DDN BELLY RIVER AMBER 56A
BNC MISS HOJER G9168 DDGR RAMPAGE 62E
BNC MISS HOJER A415

WINTER YEARLING

BD	1/15/22
BW	78
WW	686
YW	1313
ADJ	3.9
REA EPD	-0.03
IMF EPD	0.19

CED	BW	WW	YW	MILK	TM	CEM
10	0.7	80	112	18	58	5

GENOMIC ENHANCED EPDs This G9168 cow is rapidly climbing the chart of female dominance in our herd. She has produced back to back outstanding calves. This Lot 42 is out of a new sire we tried named Eminence. We wanted to inject some calving ease without sacrificing performance. Man did it work! 78 lb birth to a 1313 lb yearling! This is a heck of a calf right here!

43 BNC MR. HOJER K283

RED • MULTIPLE POLLED • PB 85%

AGA# 1543481 • Tattoo: BNC K283

HDG HILLSDOWN FINNEGAN 4F DL JEN-TY DYNAMITE
HDG AVERY 13D
BNC MISS HOJER F8162 BNC EXPRESS B4154
BNC MISS HOJER A355

WINTER YEARLING

BD	1/21/22
BW	76
WW	652
YW	1262
ADJ	3.8
REA EPD	0.97
IMF EPD	0.10

CED	BW	WW	YW	MILK	TM	CEM
13	0.5	84	126	20	62	7

GENOMIC ENHANCED EPDs Holy smokes everyone! If you're looking for some new red purebred genetics that are going to bring you an instant bump in the weight of your next calf crop, Lot 43 needs to be circled twice. He has a WW, YW, Ribeye, and Carcass weight all in the top 5% of the breed! His F8162 dam has been a consistent producer of high performance genetics.



LOT 40



LOT 41



LOT 42



RED PUREBRED BULLS

44 BNC MR. HOJER K286

RED • HOMO POLLED • PB 94%

AGA# 1543483 • Tattoo: BNC K286

BNC WHISKEY ECLIPSE D6292 BNC ECLIPSE A360
BNC MISS HOJER U8136
BNC MISS HOJER C584 BCFG BUTLERS RED OAK 908W
DEE S86

WINTER YEARLING

BD	1/25/22
BW	79
WW	762
YW	1294
ADJ	3.3
REA EPD	0.68
IMF EPD	0.09

CED	BW	WW	YW	MILK	TM	CEM
11	-0.4	70	103	26	60	4

GENOMIC ENHANCED EPDs For those of you that missed out on the opportunity to purchase our AI sire Pendleton a few years ago, here is your second chance! Lot 44 is a full brother to BNC Pendleton G969. He could essentially be his twin, that's how alike they are. Great muscle expression and thickness all throughout. This cow hits it out of the park when mated with Whiskey Eclipse! Big time potential with this bull!

45 BNC MR. HOJER K292

RED • MULTIPLE POLLED • PB 94%

AGA# 1543487 • Tattoo: BNC K292

HDG HILLSDOWN FINNEGAN 4F DL JEN-TY DYNAMITE
HDG AVERY 13D
BNC MISS HOJER G966 PMG 06A
BNC MISS HOJER C5175

WINTER YEARLING

BD	1/27/22
BW	70
WW	613
YW	1167
ADJ	3.5
REA EPD	0.64
IMF EPD	0.11

CED	BW	WW	YW	MILK	TM	CEM
14	-0.6	71	104	15	51	8

Lot 45 is a very solid Finnegan son. I really like his low birth weight coming from a powerful 06A daughter. He has a very large bone structure and is big footed. This guy will mature into a very good herd bull!

46 BNC MR. HOJER K299

RED • HOMO POLLED • PB 92%

AGA# 1543492 • Tattoo: BNC K299

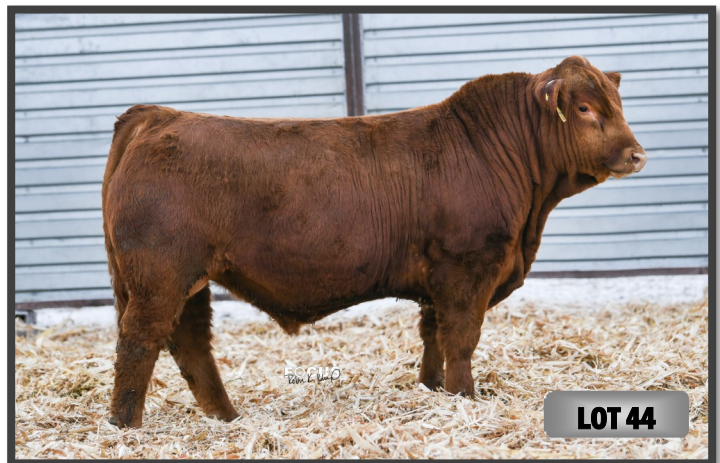
JNCC RED DIRECTIVE 367A ASCH JNCC RESOLUTE DIRECTIVE
JNCC RIKKI FORTUNE 09X
BNC MISS HOJER D679 JMDS FREIGHTLINER
BNC MISS HOJER Y086

WINTER YEARLING

BD	1/28/22
BW	85
WW	623
YW	1245
ADJ	3.9
REA EPD	0.35
IMF EPD	0.26

CED	BW	WW	YW	MILK	TM	CEM
10	2.0	80	114	17	56	6

GENOMIC ENHANCED EPDs We gave the Red Directive sire a try this year as another option for outcross red genetics. This Freightliner dam did a fine job with this one. He has a great middle to him and has a great front end in terms of eye appeal. If you're looking to try some new bloodlines, you won't go wrong here!



GENOMIC ENHANCED EPD's

The American Gelbvieh Association first incorporated genomic information into the summer 2013 genetic evaluation. Dr. Dorian Garrick of Iowa State University reported that a Gelbvieh/Balancer® specific panel of DNA markers can be used to develop genomic-enhanced EPDs (GE EPDs). The combination of database information and genomic data resulted in EPDs that roll the accuracy of a DNA test and the information of individual, pedigree, and progeny performance into one, easy to use number.

USING GE EPD's CAN HELP YOUR OPERATION IN 3 WAYS:

1. Increasing accuracy
2. Reducing risk by reducing possible change
3. Increasing rate of genetic change

47 BNC MR. HOJER K2107

RED • MULTIPLE POLLED • PB 88%

AGA# 1543498 • Tattoo: BNC K2107

HDG HILLSDOWN FINNEGAN 4F DL JEN-TY DYNAMITE
HDG AVERY 13D
BNC MISS HOJER G951 RTRT GREAT DIVIDE 503C
BNC MISS HOJER D710

WINTER YEARLING

BD	1/30/22
BW	79
WW	650
YW	1204
ADJ	3.5
REA EPD	0.66
IMF EPD	0.21

CED	BW	WW	YW	MILK	TM	CEM
14	-0.6	74	110	24	61	8

Here is a uniquely made Finnegan son. He will have more frame than most of them. I suppose we can give credit to Great Divide on his maternal side for that. This guy could be used both ways — either on heifers or cows. Low birth to high growth! It's nice to have options!

48 BNC MR. HOJER K2115

RED • HOMO POLLED • PB 84%

AGA# 1543504 • Tattoo: BNC K2115

BNC WHISKEY ECLIPSE D6292 BNC ECLIPSE A360
BNC MISS HOJER U8136
BNC MISS HOJER F858 DVE DAVIDSON CASSANOVA
BNC MISS HOJER Z217

WINTER YEARLING

BD	2/2/22
BW	79
WW	687
YW	1305
ADJ	3.9
REA EPD	0.61
IMF EPD	0.19

CED	BW	WW	YW	MILK	TM	CEM
10	1.1	69	104	29	63	4

GENOMIC ENHANCED EPDs In 2021 the Whiskey Eclipse sons were very popular. Lot 48's full brother got snatched up by Paul Slovek. This one is a touch more moderate than last year's version but did not hold back on thickness. This bull has a HUGE top on him and a rear end that I wish every bull had! If you haven't tried Whiskey Eclipse genetics yet, you better jump on board!

49 BNC MR. HOJER K2116

RED • MULTIPLE POLLED • PB 81%

AGA# 1543505 • Tattoo: BNC K2116

JNCC RED DIRECTIVE 367A ASCH JNCC RESOLUTE DIRECTIVE
JNCC RIKKI FORTUNE 09X

BNC MISS HOJER C566 HAD THE JUDGE ET
BNC MISS HOJER Y013

WINTER YEARLING

BD	2/3/22
BW	81
WW	631
YW	1285
ADJ	4.1
REA EPD	0.56
IMF EPD	0.08

CED	BW	WW	YW	MILK	TM	CEM
11	-0.1	73	102	20	57	6

Any time you spot The Judge in a bull's pedigree, you kind of have to take notice! The Judge was our first official "Guts, Butts, and Nuts" bull. Lot 49 is going to mature into a herd bull that carries on the tradition with all of those attributes!

50 BNC MR. HOJER K2170

RED • MULTIPLE POLLED • PB 94%

AGA# 1546790 • Tattoo: BNC K2170

BNC INFERNO F8115 PMG 06A
BNC MISS HOJER X186

BNC MISS HOJER E7103 JEMG SILVER DOLLAR Z645
BNC MS HOJER Z212

SPRING YEARLING

BD	3/5/22
BW	72
WW	646
YW	1288
ADJ	4.0
REA EPD	0.65
IMF EPD	0.11

CED	BW	WW	YW	MILK	TM	CEM
12	0.6	74	118	20	58	8

An awesome younger purebred bull calf right here! Lot 50's dam and grand dam are two of the most powerful red cows on the ranch. When you see this bull you will be amazed by his depth of body and neck extension. This bull has been gaining steam since weaning and nearly hit 1300 pounds at yearling! I can't wait to make more Inferno sons that look just like this!

51 BNC MR. HOJER K2179

RED • MULTIPLE POLLED • PB 88%

AGA# 1546798 • Tattoo: BNC K2179

BNC INFERNO F8115 PMG 06A
BNC MISS HOJER X186

BNC MISS HOJER D641 HAD THE JUDGE ET
BNC Z2238

SPRING YEARLING

BD	3/7/22
BW	74
WW	599
YW	1377
ADJ	4.9
REA EPD	0.54
IMF EPD	0.14

CED	BW	WW	YW	MILK	TM	CEM
11	-0.1	66	100	26	59	7

We normally run this D641 cow with one of our Balancer bulls or a Red Angus bull but we elected to try Inferno on her this time and I'm very happy we did. She is a bigger framed cow and as a result this bull will definitely have some good size to him. Red purebred genetics seem to be getting more scarce around the country so take advantage when you can!

52 BNC MR. HOJER K2185

RED • MULTIPLE POLLED • PB 88%

AGA# 1546803 • Tattoo: BNC K2185

RTRT GREAT DIVIDE 503C DCH HILLE X102
RTRT DARCI 301A

BNC MISS HOJER C5349 WOAK REVOLUTION 08T
FMH 8723U

SPRING YEARLING

BD	3/12/22
BW	83
WW	615
YW	1283
ADJ	4.2
REA EPD	0.62
IMF EPD	0.26

CED	BW	WW	YW	MILK	TM	CEM
10	1.3	81	122	31	71	5

Pounds, Pounds, and MORE Pounds! That is what I think of when analyzing Lot 52. He has a pedigree that is chalk full of high performance genetics and it has clearly shined through. Top 10% of the breed for WW and YW. And look what's even more impressive, top 1% of the breed for Milk and TM!!

53 BNC MR. HOJER K2202

RED • MULTIPLE POLLED • PB 94%

AGA# 1549121 • Tattoo: BNC K2202

BNC INFERNO F8115 PMG 06A
BNC MISS HOJER X186

BNC MISS HOJER D637 RID R COLLATERAL 2R
BNC MISS HOJER X1183

SPRING YEARLING

BD	3/18/22
BW	82
WW	733
YW	1225
ADJ	3.1
REA EPD	0.57
IMF EPD	0.14

CED	BW	WW	YW	MILK	TM	CEM
11	0.8	74	113	22	59	6

Whenever I see Astro on the top and bottom side of a pedigree, my head goes right to female maker! Lot 53 has so many great maternal qualities bred into him that I have no doubt he will raise some great females! Big time weaning at 733 pounds!



54 HOJ HOJER CATTLE K238

RED • MULTIPLE POLLED • PB 94%

AGA# 1543804 • Tattoo: HOJ K238

BNC PAYCHECK E7242 JEMG SILVER DOLLAR Z645
BNC S631

BNC KATALINA D6113 PMG 06A
BNC MISS HOJER X127

SPRING YEARLING

BD	4/2/22
BW	79
WW	823
YW	1205
ADJ	3.6
REA EPD	0.77
IMF EPD	0.15

CED	BW	WW	YW	MILK	TM	CEM
11	2.0	76	117	17	55	8

K238 has been a favorite since birth because who doesn't love a dark cherry red purebred! But besides that, this young calf combines the combination of width, smooth shoulder, bone, performance, and a front end you just don't normally see in a purebred! All this shouldn't be a surprise because Katalina is definitely going to the donor pen at some point for how unique she is!

55 BNC MR. HOJER K2248

RED • MULTIPLE POLLED • PB 94%

AGA# 1550508 • Tattoo: BNC K2248

BNC INFERNO F8115 PMG 06A
BNC MISS HOJER X186

BNC MISS HOJER E7375 RID R COLLATERAL 2R
BNC MISS HOJER B535

SPRING YEARLING

BD	4/19/22
BW	79
WW	691
YW	1275
ADJ	3.8
REA EPD	0.44
IMF EPD	0.13

CED	BW	WW	YW	MILK	TM	CEM
11	0.7	66	99	13	46	5

Its getting to the point that it is very difficult to market younger April born bulls on our sale simply because many of our bulls are older Winter Yearlings or Fall born bull. So if we have a young bull like this in the catalog, just know that we must think he is pretty special! Take a look for yourself on March 6 and I bet you'll agree!

RED PUREBRED BULLS

What to expect from the Balancer group?

Herd sires with 75% or less Gelbvieh with the remaining breed make up of either being Angus or Red Angus are in the "Balancer" group. The "Balancer" is documented crossbreeding that allows you to add an influence of Gelbvieh to your herd to the degree that fits your breeding program. The Gelbvieh Breed has been a leader in the effort to adapt to the needs and wants of the Ranch with Innovation and Flexibility. You are going to find some very High Performance Genetics in the Balancer group with the likes of Ditka, Civil War, Rainfall, Whiskey Eclipse, Rampage, Deep End, and more!

Black Balancer Bulls (LOTS 56-82)

56 BNC MR. HOJER J201

HOMO BLACK • HOMO POLLED • BA 56%							WINTER YEARLING	
AGA# 1543435 • Tattoo: BNC J201							BD	12/24/21
JKGF DITKA C85 SANDPOINT BUTKUS X797 JKGF LADYBUG A012							BW	83
BNC MISS HOJER H096 BNC HEADLINE C5155 BNC MISS HOJER A3251							WW	729
							YW	1335
							ADJ	3.8
CED	BW	WW	YW	MILK	TM	CEM	REA EPD	0.43
8	0.4	79	128	27	66	4	IMF EPD	0.24

GENOMIC ENHANCED EPDs Its only fitting that we start out our Balancer section with a Ditka son! They have undoubtedly surpassed all expectations over the years. Lot 56 is an absolute powerhouse. HOMO Black and Polled and top 15% of the breed for growth! Not to mention he is the pet of the pen. If he walks up you, he is just looking for a scratch!



LOT 56

57 BNC MR. HOJER J213

HOMO BLACK • MULTI POLLED • BA 50%							WINTER YEARLING	
AGA# 1543415 • Tattoo: BNC J213							BD	12/30/21
JKGF DITKA C85 SANDPOINT BUTKUS X797 JKGF LADYBUG A012							BW	68
BNS MISS HOJER B519 BNC MR HOJER Y036 BNC MISS HOJER A3255							WW	596
							YW	1185
							ADJ	3.7
CED	BW	WW	YW	MILK	TM	CEM	REA EPD	0.54
11	0.4	80	120	22	62	7	IMF EPD	0.18

Here is another twin everyone so do not discriminate! This is the fourth year in a row the B519 cow has been bred to Ditka. That must be because it flat out works! She raised both calves herself and the heifer weaned off at 620 pounds. That means this cow weaned off over 1200 pounds of calf! This bull is going to be a very good one guys, he's just playing a little catch up.

59 BNC MR. HOJER K223

BLACK • HOMO POLLED • BA 75%							WINTER YEARLING	
AGA# 1543424 • Tattoo: BNC K223							BD	1/3/22
WOAK REVOLUTION 08T KCF BENNETT KINGPIN K403 RLBG TAMARA N006							BW	84
BNC MISS HOJER F857 SAV RECHARGE 3436 THUL A321							WW	657
							YW	1272
							ADJ	3.9
CED	BW	WW	YW	MILK	TM	CEM	REA EPD	0.45
10	1.3	77	111	24	62	4	IMF EPD	0.22

GENOMIC ENHANCED EPDs In the coming years, you are more than likely going to be seeing more 75% bulls in the catalog. Why is that you ask? Because we are seeing that when breeding these Balancers to Purebreds, we are getting more out of our heterosis and increasing our hybrid vigor. You will love the looks of Lot 59 and will want to take him home you improve your heterosis as well!

58 BNC MR. HOJER K221

HOMO BLACK • HOMO POLLED • BA 50%							WINTER YEARLING	
AGA# 1543422 • Tattoo: BNC K221							BD	1/2/22
JKGF CIVIL WAR E92 VAR DISCOVERY 2240 JKGF LOTTIE C92							BW	81
BNC MISS HOJER E765 BRUNS THUNDERBOLT 963 BEA 2072Z							WW	694
							YW	1374
							ADJ	4.3
CED	BW	WW	YW	MILK	TM	CEM	REA EPD	0.50
12	-0.3	90	145	21	66	8	IMF EPD	0.50

GENOMIC ENHANCED EPDs Just look to the right and you will see more than anything I can say in this description box. Lot 58 is HOMO Black with a massive middle, wide top, and great hind end! Absolutely should be on everyone's list. Top 2% of the breed for growth and he even has an IMF in the top 25%. This is one of our top Balancer bulls this year and you will have to drive the wheels off your truck trying to find one much better!



LOT 58

60 BNC MR. HOJER K232

BLACK • SCURRED • BA 56%

AGA# 1543433 • Tattoo: BNC K232

JKGF CIVIL WAR E92 VAR DISCOVERY 2240
JKGF LOTTIE C92

BNC MISS HOJER G9161 BNC HEADLINE C5155
BNC MISS HOJER U8173

WINTER YEARLING

BD	1/6/22
BW	82
WW	727
YW	1388
ADJ	4.2
REA EPD	0.61
IMF EPD	0.46

CED BW WW YW MILK TM CEM

12	-0.6	80	130	24	64	7
----	------	----	-----	----	----	---

GENOMIC ENHANCED EPDs I vividly remember when G9161 came through the chute and I knew instantly what I would breed her to. Hands down I just knew Civil War was the right fit. She is a larger framed female with good carcass traits that needed beefed up and shrunk down a touch. That is precisely the result. Lot 60 is what we strive for every bull to look like! Huge performance (130 YW) and great Carcass (top 15% Marbling)!

61 BNC MR. HOJER K242

HOMO BLACK • HOMO POLLED • BA 75%

AGA# 1543443 • Tattoo: BNC K242

WOAK REVOLUTION 08T KCF BENNETT KINGPIN K403
RLBG TAMARA N006

BNC MISS HOJER G937 JKGF DITKA C85
BNC MISS HOJER A3114

WINTER YEARLING

BD	1/9/22
BW	85
WW	732
YW	1414
ADJ	4.3
REA EPD	0.44
IMF EPD	0.28

CED BW WW YW MILK TM CEM

10	1.9	78	122	31	70	4
----	-----	----	-----	----	----	---

GENOMIC ENHANCED EPDs Every year we will have those one or two bulls that when you walk into the pen you have to wonder, does he belong in with the fall bulls? Well, that's Lot 61. His overall mass and size makes him pretty much stand above everyone else in the pen. If your looking for just a bruiser of a bull that will add pounds to you're calves faster then the Vikings post season run, here is your guy. Sorry Vikings fans, I couldn't help myself!

62 BNC MR. HOJER K255

BLACK • MULTIPLE POLLED • BA 75%

AGA# 1543455 • Tattoo: BNC K255

WOAK REVOLUTION 08T KCF BENNETT KINGPIN K403
RLBG TAMARA N006

BNC MISS HOJER G961 JKGF DITKA C85
BNC MISS HOJER B4277

WINTER YEARLING

BD	1/14/22
BW	79
WW	766
YW	1184
ADJ	2.6
REA EPD	0.51
IMF EPD	0.32

CED BW WW YW MILK TM CEM

11	1.2	83	122	28	70	5
----	-----	----	-----	----	----	---

Here is a combination of old school meeting new school. Revolution is a bit of a blast from the past but when crossed with the more modern day Ditka genetics, you get a very nice package. This bull has a mountain of middle to him. Probably one of the deepest bodied bulls in the pen. He would be a great breeding piece in a cross breeding system!

63 BNC MR. HOJER K258

HOMO BLACK • HOMO POLLED • BA 81%

AGA# 1543457 • Tattoo: BNC K258

EGL ENCORE E7166 JOB DANELL TD CHICO LOCO 28Y
GRU MS ASTRO 298Z

BNC MISS HOJER G925 BNC WHISKEY ECLIPSE D6292
BNC MS HOJER Z254

WINTER YEARLING

BD	1/15/22
BW	84
WW	695
YW	1347
ADJ	4.1
REA EPD	0.64
IMF EPD	0.17

CED BW WW YW MILK TM CEM

9	1.4	75	117	21	59	2
---	-----	----	-----	----	----	---

GENOMIC ENHANCED EPDs Lot 63 is a very interesting breeding option. I actually really like his breed composition being 81% Gelbvieh. This gives you a ton of flexibility on where to use him. He could easily be used on a strait Angus cow base or could be used in a crossbred herd. Either way, with a scale busting 1347 yearling weight you can't go wrong!



LOT 60



LOT 61

64 BNC MR. HOJER K259

HOMO BLACK • MULTI POLLED • BA 48%

AGA# 1543458 • Tattoo: BNC K259

JKGF DITKA C85 SANDPOINT BUTKUS X797
JKGF LADYBUG A012

BNC MISS HOJER D6274 SGRI CHISEL X603
BNC MISS HOJER Z2250

WINTER YEARLING

BD	1/15/22
BW	70
WW	612
YW	1142
ADJ	3.3
REA EPD	0.45
IMF EPD	0.18

CED BW WW YW MILK TM CEM

14	-2.3	70	106	16	51	8
----	------	----	-----	----	----	---

People better be thinking long and hard about female retention in the coming years. National cow numbers are down. The bred females are going to become expensive. You are going to need bulls like Lot 64! With his eye appeal and natural substance to go along with a -2.3 BW, I would breed every single heifer I have to this guy! The calves will come easy and explode from there!

65 BNC MR. HOJER K265

BLACK • MULTIPLE POLLED • BA 47%

AGA# 1543464 • Tattoo: BNC K265

JKGF DITKA C85 SANDPOINT BUTKUS X797
JKGF LADYBUG A012

BNC MISS HOJER B4121 SDS MAINLINE 986W
RFBG N108

WINTER YEARLING

BD	1/15/22
BW	83
WW	645
YW	1272
ADJ	3.9
REA EPD	0.46
IMF EPD	0.11

CED BW WW YW MILK TM CEM

10	0.6	78	122	20	59	6
----	-----	----	-----	----	----	---

A full brother to Lot 65 was Hojer Cattle Company's pick of the pen a few years back. This Ditka/Mainline combination has consistently worked out well! This guy will add some stretch and put some leg under his calves. Last I checked, pounds still pay the bills and Lot 65 will help pad your bank account!

BLACK BALANCER BULLS

66

BNC MR. HOJER K266

BLACK • MULTIPLE POLLED • BA 81%

AGA# 1543465 • Tattoo: BNC K266

EGL ENCORE E7166

JOB DANELL TD CHICO LOCO 28Y
GRU MS ASTRO 298Z

BNC C5348

VRT LAZY TV SAM U451
BNC MISS HOJER B4143

WINTER YEARLING

BD	1/15/22
BW	77
WW	612
YW	1191
ADJ	3.6
REA EPD	0.65
IMF EPD	0.31

CED BW WW YW MILK TM CEM

12	-0.4	66	95	17	50	5
----	------	----	----	----	----	---

Here is an Encore son that brings a very long made phenotype and has great middle mass. His Sam sired mother brings an element of calving ease to the table. You just have to respect a higher percentage bull with a low birthweight but when older, presents himself as a very physically impressive individual!

67

BNC MR. HOJER K271

HOMO BLACK • MULTI POLLED • BA 53%

AGA# 1543470 • Tattoo: BNC K271

JKGF DITKA C85

SANDPOINT BUTKUS X797
JKGF LADYBUG A012

BNC MISS HOJER C613

BNC MR. HOJER Y036
BNC MISS HOJER B4100

WINTER YEARLING

BD	1/17/22
BW	76
WW	596
YW	1247
ADJ	4.1
REA EPD	0.55
IMF EPD	0.18

CED BW WW YW MILK TM CEM

12	-0.3	73	109	20	56	7
----	------	----	-----	----	----	---

There really aren't many holes to find in a Homozygous Black Ditka son. Just like most Ditka's, Lot 67 has a nice moderate frame with great depth and a bunch of natural thickness. Take advantage of a Ditka son while you can because we most likely will be moving on to something new in the near future as we have used Ditka for 5 years now.

68

BNC MR. HOJER K275

HOMO BLACK • MULTI POLLED • BA 71%

AGA# 1543474 • Tattoo: BNC K275

BNC CLASS ACTION G915

JKGF CHIEF JUSTICE C205
BNC MISS HOJER A356

BNC MISS HOJER E7331

SHIPWHEEL CHINOOK
BNC MISS HOJER D679

WINTER YEARLING

BD	1/17/22
BW	58
WW	536
YW	1122
ADJ	3.7
REA EPD	0.37
IMF EPD	0.41

CED BW WW YW MILK TM CEM

13	-0.8	71	107	20	56	9
----	------	----	-----	----	----	---

Lot 68 is about as styling as they come. He really doesn't look like a Class Action son at all. Most likely because of his complete outcross dam which goes back to Chinook. This guy has the lowest birthweight in our entire offering and he is not a twin. He is HOMO Black and would be a great fit for breeding your replacement heifers this spring. Top 15% calving ease and Top 10% birth weight!

69

BNC MR. HOJER K279

HOMO BLACK • HOMO POLLED • BA 75%

AGA# 1543477 • Tattoo: BNC K279

DCH BIG ANDY D672

DCH HILLE Y109
DCH HILLE 4266

BNC MISS HOJER G9188

BNC COMPLETE PACKAGE Z272
BNC MS HOJER Z2116

WINTER YEARLING

BD	1/20/22
BW	71
WW	646
YW	1204
ADJ	3.5
REA EPD	0.12
IMF EPD	0.34

CED BW WW YW MILK TM CEM

17	-1.5	71	105	22	57	10
----	------	----	-----	----	----	----

GENOMIC ENHANCED EPDs This three quarter blood Balancer has some of the highest calving ease marks in the sale offering. The HILLE Y109 bull has produced some great calving ease sires in the Gelbvieh breed that spread across the nation, one of the best being HILLE F124. I fully anticipate this Y109 grandson to set a new standard of functionality, performance, and calving ease!

70

BNC MR. HOJER K295

BLACK • HOMO POLLED • BA 70%

AGA# 1543488 • Tattoo: BNC K295

CKS UNRIVALED G54

CKS LEGACY E64
CKS MS EASE E57

BNC MISS HOJER G003

JKGF DITKA C85
BNC MISS HOJER E7332

WINTER YEARLING

BD	1/27/22
BW	84
WW	713
YW	1304
ADJ	3.7
REA EPD	0.92
IMF EPD	0.03

CED BW WW YW MILK TM CEM

11	1.2	85	133	30	72	6
----	-----	----	-----	----	----	---

GENOMIC ENHANCED EPDs I'm pretty excited about the future of CKS Unrivaled at Hojer Ranch. It has taken a couple years to find out just where he fits but I believe I have it figured out. He is a very large framed bull and when crossed with a soggy deep bodied balancer female, the result is very desirable. That is exactly what you will find in Lot 70. Big time growth and big time Ribeye! Top 1% of the breed for Milk, TM, and Ribeye!

71

BNC MR. HOJER K298

HOMO BLACK • HOMO POLLED • BA 81%

AGA# 1543491 • Tattoo: BNC K298

JKGF CHIEF JUSTICE C205

CCRO CAROLINA LEVERAGE 3214A
KCF MISS FORTUNE U490

BNC MISS HOJER G9208

BNC HEADLINE C5155
BNC MS HOJER Z241

WINTER YEARLING

BD	1/28/22
BW	71
WW	714
YW	1364
ADJ	4.1
REA EPD	0.71
IMF EPD	0.21

CED BW WW YW MILK TM CEM

11	-0.2	72	114	23	59	7
----	------	----	-----	----	----	---

GENOMIC ENHANCED EPDs We don't have a huge selection of Chief Justice sons this year because our semen supply is limited and we are being very selective on where to use him. I'm sure glad we used him here because G9208 gave us a very low birthweight calf that skyrocketed to a 1364 yearling weight!. These Chief Justice sons are always very good at carcass quality. Top 25% for both Ribeye and Marbling!

72

BNC MR. HOJER K2110

HOMO BLACK • MULTI POLLED • BA 52%

AGA# 1543500 • Tattoo: BNC K2110

JKGF DITKA C85

SANDPOINT BUTKUS X797
JKGF LADYBUG A012

BNC MISS HOJER H0142

BNC HEADLINE C5155
BNC MISS HOJER D6328

WINTER YEARLING

BD	1/31/22
BW	83
WW	702
YW	1330
ADJ	4.0
REA EPD	0.53
IMF EPD	0.08

CED BW WW YW MILK TM CEM

10	1.4	80	129	25	65	6
----	-----	----	-----	----	----	---

GENOMIC ENHANCED EPDs Lot 72 is one of my favorite Ditka sons. He has a very unique design and style that is not typically common with Ditka genetics. He is long necked and very clean fronted. He has great depth and is deceptively long bodied. This guy should be popular on sale day. Top 10% for growth and HOMO Black!

73

HOJ HOJER CATTLE K205

BLACK • MULTIPLE POLLED • BA 42%

AGA# 1548067 • Tattoo: HOJ K205

TAU UNANIMOUS 11B ET

CONNEALY CONSENSUS 7229
TAU MISS RODEO DRIVE 321N

EGL FARAH E133

EGL BARRETT B050
EGL FARAH B593

WINTER YEARLING

BD	2/26/22
BW	83
WW	724
YW	1121
ADJ	2.5
REA EPD	0.18
IMF EPD	0.33

CED BW WW YW MILK TM CEM

12	0.4	76	113	20	58	7
----	-----	----	-----	----	----	---

K205 brings some older genetics with Unanimous being his sire, which a lot of you will remember Unanimous bringing a lot of length, depth, eye appeal, and most importantly, the performance that makes the type of cattle that will put money in your pocket. This guy has all of the qualities you would expect from Unanimous but then his dam makes him have more calving ease and lower birthweight so you can sleep easy during calving season.

74

BNC MR. HOJER K2150

BLACK • MULTIPLE POLLED • BA 75%

AGA# 1543537 • Tattoo: BNC K2150

BNC DAY DREAM E7340 CRAN DREAM ON Y054
BNC MISS HOJER D661

BNC MISS HOJER A3254 SDS NEWSLINE 654S
BNC S643

WINTER YEARLING

BD	2/28/22
BW	78
WW	501
YW	1135
ADJ	4.0
REA EPD	0.34
IMF EPD	0.31

CED	BW	WW	YW	MILK	TM	CEM
10	0.1	58	85	22	51	7

This old girl is about at the end of her tenure her at Hojer Ranch, but she is still putting out a nice product. Lot 74 could be used in many different settings and will provide adequate growth and maintain nice calving ease. Its great to see 10 year old cows still getting it done. Longevity is an underrated asset that the Gelbvieh breed provides.

75

BNC MR. HOJER K2159

BLACK • MULTIPLE POLLED • BA 69%

AGA# 1546781 • Tattoo: BNC K2159

FHG DEEP END 577F ET BIEBER DEEP END B597
FHG FLYING H MS 51P 171Y

BNC MISS HOJER A356 JDPD ASTRO 407S
BNC S609

SPRING YEARLING

BD	3/2/22
BW	82
WW	530
YW	1186
ADJ	4.1
REA EPD	0.56
IMF EPD	0.34

CED	BW	WW	YW	MILK	TM	CEM
11	0.7	70	106	24	59	7

Same pasture and same story with this Lot 75 that I stated about Lot 77. This A356 cow is in my opinion is the #1 cow on our place. She has produced not 1, not 2, but 3 high selling bulls in our past production sales. When you see this guy on March 6, you will easily notice how much he is maturing and developing after some rough summer growing conditions!

76

BNC MR. HOJER K2166

BLACK • MULTIPLE POLLED • BA 78%

AGA# 1546786 • Tattoo: BNC K2166

BNC INFERNO F8115 PMG 06A
BNC MISS HOJER X186

BNC MISS HOJER G9138 BNC HEADLINE C515S
BNC MISS HOJER C566

SPRING YEARLING

BD	3/4/22
BW	72
WW	481
YW	1200
ADJ	4.5
REA EPD	0.45
IMF EPD	0.12

CED	BW	WW	YW	MILK	TM	CEM
13	-1.1	57	89	22	51	7

Top notch calving ease prospect in this Lot 76. The Inferno sire group proved to be the lowest birthweight group this year. Nobody likes having calving difficulties. Lot 76 will certainly eliminate any problems on that front. -1.1 on BW puts him in the top 10% of the breed!

77

BNC MR. HOJER K2173

BLACK • MULTIPLE POLLED • BA 75%

AGA# 1546792 • Tattoo: BNC K2173

FHG DEEP END 577F ET BIEBER DEEP END B597
FHG FLYING H MS 51P 171Y

BNC MISS HOJER C590 JMDS FREIGHTLINER
BNC MISS HOJER Z332

SPRING YEARLING

BD	3/5/22
BW	77
WW	566
YW	1352
ADJ	4.9
REA EPD	0.79
IMF EPD	0.30

CED	BW	WW	YW	MILK	TM	CEM
14	0.1	77	118	20	59	8

I like lot 77 so much that at the last minute, when we were walking bulls to the picture pen, I went back and grabbed him. Forget about his average weaning weight. He was in our driest, toughest pasture. He shot up to 1352 pounds after weaning. He has the hip and bone structure and the mass in the middle that I want every bull to have. His dam is one of our year in year out top producers. This guy is truly a top end bull! Don't miss out on him!

78

BNC MR. HOJER K2178

BLACK • HOMO POLLED • BA 81%

AGA# 1546797 • Tattoo: BNC K2178

RTRT GREAT DIVIDE 503C DCH HILLE X102
RTRT DARCI 301A

BNC MISS HOJER E7134 SGRI CHISEL X603
BNC MISS HOJER Y037

SPRING YEARLING

BD	3/7/22
BW	70
WW	629
YW	1384
ADJ	4.7
REA EPD	0.68
IMF EPD	0.29

CED	BW	WW	YW	MILK	TM	CEM
16	-0.6	74	116	28	65	9

GENOMIC ENHANCED EPDs I am so disappointed that we could not get a very good picture of Lot 78. That being said, make sure you all check his video out. The potential this bull has is limitless! He has a very long body type that is squarely made. Until you get behind him, you wont realize how thick he actually is. He has good frame size and has a very stylish front end. With an Elite EPD profile that is super impressive, this guy should have a bright future!

79

BNC MR. HOJER K2180

BLACK • MULTIPLE POLLED • BA 75%

AGA# 1546799 • Tattoo: BNC K2180

BNC INFERNO F8115 PMG 06A
BNC MISS HOJER X186

BNC MISS HOJER D6291 BNC COMPLETE PACKAGE Z272
BNC MISS HOJER U830

SPRING YEARLING

BD	3/7/22
BW	78
WW	581
YW	1392
ADJ	5.1
REA EPD	0.44
IMF EPD	0.26

CED	BW	WW	YW	MILK	TM	CEM
13	0.1	70	108	21	56	8

This D6291 is steadily climbing the female ranks around here. Her calves over the years have been consistent and keep getting better. This Inferno son has some of the highest gains after weaning in our entire offering. He came up just 8 pounds shy of 1400. Just incredible! And look, he's a three quarter blood so breed him up or breed him down. Both ways will undoubtedly work great!

80

BNC MR. HOJER K2182

BLACK • SCURRED • BA 81%

AGA# 1546801 • Tattoo: BNC K2182

DDGR RAMPAGE 62E DDGR NOBLE MAN 79B
DDGR 9Y

BNC MISS HOJER A3310 BNC POWER MAX U812
BNC M320

SPRING YEARLING

BD	3/8/22
BW	89
WW	562
YW	1331
ADJ	4.8
REA EPD	0.64
IMF EPD	0.21

CED	BW	WW	YW	MILK	TM	CEM
7	2.7	68	101	27	61	3

Talk about a bull built like a bowling ball! Lot 80 is a moderate size bull that has a crazy amount of thickness distributed from front to back. I just love his rear quarter. Its rare to find that kind of muscle shape in a balancer package. Don't overlook that he topped the scales at 1331 lbs of weaning weight. This is a very solid Rampage calf!



LOT 77

BLACK BALANCER BULLS

81 HOJ HOJER CATTLE K230

BLACK • MULTIPLE POLLED • BA 75%

AGA# 1548066 • Tattoo: HOJ K230

BNC PAYCHECK E7242

JEMG SILVER DOLLAR Z645
BNC S631

EGL ESTELLE G016 ET

LD CAPITALIST 316
EGL ESTELLE X014

SPRING YEARLING

BD	3/22/22
BW	83
WW	832
YW	1174
ADJ	2.8
REA EPD	0.84
IMF EPD	0.10

CED BW WW YW MILK TM CEM

11	2.0	78	117	17	56	7
----	-----	----	-----	----	----	---

If you want to add pounds to your calves without adding more frame to your herd, look here. K230 is one of those bulls that has the right combination of length, depth, width, and performance that combines perfectly to add pounds. WW of 832!



82 BNC MR. HOJER K2246

BLACK • MULTIPLE POLLED • BA 69%

AGA# 1550506 • Tattoo: BNC K2246

FHG DEEP END 577F ET

BIEBER DEEP END B597
FHG FLYING H MS 51P 171Y

BNC MISS HOJER E7127

JMDS FREIGHTLINER
BNC MISS HOJER A3314

SPRING YEARLING

BD	4/15/22
BW	85
WW	771
YW	1345
ADJ	4.2
REA EPD	0.76
IMF EPD	0.32

CED BW WW YW MILK TM CEM

11	1.9	82	125	23	64	6
----	-----	----	-----	----	----	---

These Deep End calves just keep getting it done! When we purchased Deep End from Flying H Genetics a few years ago, I had pretty high expectations. I never imagined he would exceed expectations. Lot 82 crushed the scales with a 771 pound WW. Big time ribeye and marbling to go with it. These Freightliner daughters get it done right!



Red Balancer Bulls (LOTS 83-98)

83 BNC MR. HOJER K237

RED • MULTIPLE POLLED • BA 81%

AGA# 1543439 • Tattoo: BNC K237

BNC WHISKEY ECLIPSE D6292

BNC ECLIPSE A360
BNC MISS HOJER U8136

BNC MISS HOJER C5340

BNC AT EASE A357
BNC MISS HOJER A426

WINTER YEARLING

BD	1/8/22
BW	71
WW	581
YW	1187
ADJ	3.8
REA EPD	0.71
IMF EPD	0.12

CED BW WW YW MILK TM CEM

10	1.3	71	106	33	68	4
----	-----	----	-----	----	----	---

Whiskey Eclipse sons were very popular last year and we were fortunate enough to have several full brothers to offer again this year. Lot 83 is as long as a train and has great feet and sound structure. His body type is designed to cover a wide territory. If you live in wide open grazing country, this guy would certainly cover some miles for you!

85 BNC MR. HOJER K2101

RED • HOMO POLLED • BA 63%

AGA# 1543494 • Tattoo: BNC K2101

EGL ENCORE E7166

JOB DANELL TD CHICO LOCO 28Y
GRU MS ASTRO 298Z

BNC MISS HOJER D724

A&B SPOTLITE 3065
BNC MISS HOJER C581

WINTER YEARLING

BD	1/28/22
BW	85
WW	644
YW	1200
ADJ	3.5
REA EPD	0.58
IMF EPD	0.19

CED BW WW YW MILK TM CEM

10	2.1	78	123	17	56	5
----	-----	----	-----	----	----	---

GENOMIC ENHANCED EPDs Lot 85 is one of the most attractive looking and stylishly made red balancers bulls we have to offer this year. He's got great extension from front to rear. He has the smooth front shoulders and it very tight necked. He certainly wins when it comes to style points! Check him out for yourself on March 6!

84 BNC MR. HOJER K256

RED • MULTIPLE POLLED • BA 75%

AGA# 1543456 • Tattoo: BNC K256

BNC WHISKEY ECLIPSE D6292

BNC ECLIPSE A360
BNC MISS HOJER U8136

BNC MISS HOJER W919

KRN LCC MAJOR LEAGUE A502M
MKT 1S141

WINTER YEARLING

BD	1/14/22
BW	76
WW	630
YW	1277
ADJ	4.1
REA EPD	0.72
IMF EPD	0.18

CED BW WW YW MILK TM CEM

11	0.0	66	96	30	63	3
----	-----	----	----	----	----	---

We are sure going to miss this old girl. This will be the last calf out of the great W919 cow. She has set the standard for red genetics in our sale for the past 13 years. Lot 84 has so many resemblances of his sire Whiskey Eclipse. He's got the wide top and is long made. Be sure to not miss out on this great genetic combination!

86 BNC MR. HOJER K2112

RED • MULTIPLE POLLED • BA 44%

AGA# 1543502 • Tattoo: BNC K2112

FHG DEEP END 577F ET

BIEBER DEEP END B597
FHG FLYING H MS 51P 171Y

BNC MISS HOJER B466

SIXM RED 6 MILE FULL THROTTLE 171T
BNC MISS HOJER X191

WINTER YEARLING

BD	1/31/22
BW	63
WW	567
YW	1079
ADJ	3.2
REA EPD	0.50
IMF EPD	0.34

CED BW WW YW MILK TM CEM

13	-0.9	70	108	23	58	6
----	------	----	-----	----	----	---

Here we have another twin bull. Lot 86 has that attractive dark cherry red coat color. His B466 dam goes back to 6 Mile Full Throttle and has been a great female for us over the years. Don't be fooled, this guy is a twin but most of his progeny won't be. They will grow and perform very well!

87 BNC MR. HOJER K2122

RED • SCURRED • BA 44%

AGA# 1543511 • Tattoo: BNC K2122

SFHG DEEP END 577F ET BIEBER DEEP END B597
FHG FLYING H MS 51P 171Y

BNC MISS HOJER C588 SIXM RED SIX MILE SAKIC 832S
BNC MISS HOJER X191

WINTER YEARLING

BD	2/6/22
BW	84
WW	795
YW	1400
ADJ	3.8
REA EPD	0.53
IMF EPD	0.35

CED	BW	WW	YW	MILK	TM	CEM
11	-2.1	70	105	27	62	6

GENOMIC ENHANCED EPDs STUD Alert!! Just take a look to your right. Lot 87 pretty much does the talking for himself. We showed him this past summer at the South Dakota State Fair and the feedback was always positive. This dude had a scale busting 795 pound weaning weight and a 1400 pound yearling weight. Look no further for a performance packed bull!



88 BNC MR. HOJER K2154

RED • MULTIPLE POLLED • BA 75%

AGA# 1546776 • Tattoo: BNC K2154

DDGR RAMPAGE 62E DDGR NOBLE MAN 79B
DDGR 9Y

BNC MISS HOJER E7157 SGRI CHISEL X603
BNC MISS HOJER X1183

WINTER YEARLING

BD	2/28/22
BW	80
WW	557
YW	1318
ADJ	4.8
REA EPD	0.62
IMF EPD	0.29

CED	BW	WW	YW	MILK	TM	CEM
11	0.7	70	110	24	59	7

Lot 88 catches my eye every time I'm walking the pens. This combination of Rampage and Chisel resulted in a powerful package. He's got a good frame to him and has some very good carcass numbers. We don't get many red Rampage sons so if you're needing to change things up a bit, here is your chance!

91 BNC MR. HOJER K2191

RED • MULTIPLE POLLED • BA 56%

AGA# 1549110 • Tattoo: BNC K2191

BNC INFERNO PMG 06A
BNC MISS HOJER X186

BNC MISS HOJER Y013 SDS NEWSLINE 654S
BNC S6153

SPRING YEARLING

BD	3/14/22
BW	71
WW	510
YW	1178
ADJ	4.2
REA EPD	0.28
IMF EPD	0.19

CED	BW	WW	YW	MILK	TM	CEM
14	-2.9	50	75	18	43	9

Here you go heifer buyers! This is the top calving ease red bull in this year's sale! Just look at that birth weight, -2.9!!! That puts him top 2% of the entire breed. He has the narrow front end and smaller head. Your heifers will be very happy with you when you open the gate and they get to meet this guy!

89 BNC MR. HOJER K2169

RED • MULTIPLE POLLED • BA 78%

AGA# 1546789 • Tattoo: BNC K2169

BNC INFERNO F8115 PMG 06A
BNC MISS HOJER X186

BNC MISS HOJER B543 RTC ATLAS 712G
BNC MISS HOJER A3262

SPRING YEARLING

BD	3/4/22
BW	75
WW	592
YW	1152
ADJ	3.5
REA EPD	0.45
IMF EPD	0.19

CED	BW	WW	YW	MILK	TM	CEM
13	-1.5	66	99	18	51	9

Here is a calving ease Inferno son that offers a little more length and stretch in his design. I predict this guy will sire calves that have a very smooth made attractive look to them. He has a sleep all night and don't think twice type of pedigree. Inferno/Atlas. There is a lot to be desired. Top 10% calving ease!

92 BNC MR. HOJER K2213

RED • MULTIPLE POLLED • BA 75%

AGA# 1549131 • Tattoo: BNC K2213

FHG DEEP END 577F ET BIEBER DEEP END B597
FHG FLYING H MS 51P 171Y

BNC MISS HOJER U870 BNC BLACK BOSS
BNC R540

SPRING YEARLING

BD	3/21/22
BW	77
WW	699
YW	1225
ADJ	3.3
REA EPD	0.71
IMF EPD	0.29

CED	BW	WW	YW	MILK	TM	CEM
13	0.0	75	104	25	62	7

It's not very often you get the opportunity to showcase an animal with a 15 year old mamma. I'm almost in shock when I see a cow of that age still wean off a 700 pound calf. Absolutely remarkable! Lot 92 is a great multi use bull. He could be used on heifers or cows. He would make a tremendous set of replacement females. Just look at the cow power that backs him!

90 BNC MR. HOJER K2176

RED • MULTIPLE POLLED • BA 78%

AGA# 1546795 • Tattoo: BNC K2176

FHG DEEP END 577F ET BIEBER DEEP END B597
FHG FLYING H MS 51P 171Y

BNC MISS HOJER E773 JEMG SILVER DOLLAR Z64S
BNC MISS HOJER X127

SPRING YEARLING

BD	3/6/22
BW	81
WW	608
YW	1190
ADJ	3.7
REA EPD	0.77
IMF EPD	0.34

CED	BW	WW	YW	MILK	TM	CEM
12	1.5	87	132	20	63	7

I was super excited when I found out this cow got mated to Deep End! I just knew the result would be impressive. E773 is a top of line performance based female. Lot 90 has great substance, big bone, and work great on about any type of female. Big time growth with a 132 YW! That puts him to 10%!



RED BALANCER BULLS

93 BNC MR. HOJER K2220

RED • MULTIPLE POLLED • BA 67%

AGA# 1550486 • Tattoo: BNC K2220

DDGR RAMPAGE 62E DDGR NOBLE MAN 79B
DDGR 9Y

BNC MISS HOJER D6311 BNC COMPLETE PACKAGE Z272
RFBG W813

SPRING YEARLING

BD	3/26/22
BW	77
WW	666
YW	1265
ADJ	3.6
REA EPD	0.49
IMF EPD	0.33

CED	BW	WW	YW	MILK	TM	CEM
11	1.5	70	107	22	57	6

Don't overlook these younger bulls. All of them have great genetics backing them. They just need a little more time to grow and mature. Everyone has been in a situation where a herd bull gets injured and they wished they had a backup. This guy has everything you need to improve your calf crop, just let him prove it!

94 BNC MR. HOJER K2231

RED • MULTIPLE POLLED • BA 59%

AGA# 1550494 • Tattoo: BNC K2231

FHG DEEP END 577F ET BIEBER DEEP END B597
FHG FLYING H MS 51P 171Y

BNC MISS HOJER F8308 JEMG SILVER DOLLAR Z645
BNC MISS HOJER B483

SPRING YEARLING

BD	4/2/22
BW	76
WW	748
YW	1305
ADJ	4.0
REA EPD	0.68
IMF EPD	0.29

CED	BW	WW	YW	MILK	TM	CEM
12	0.9	83	124	21	62	7

GENOMIC ENHANCED EPDs Here is a young Deep End son that checks several boxes. Adequate calving ease, tremendous growth, and a Big Ol Ribeye! I mean seriously! 76 pounds at birth and 748 at weaning. Lot 94 is a very impressive individual!

95 BNC MR. HOJER K2232

RED • MULTIPLE POLLED • BA 75%

AGA# 1550495 • Tattoo: BNC K2232

FHG DEEP END 577F ET BIEBER DEEP END B597
FHG FLYING H MS 51P 171Y

BNC MISS HOJER G9143 RTRT GREAT DIVIDE 503C
BNC MISS HOJER Z325

SPRING YEARLING

BD	4/2/22
BW	80
WW	846
YW	1385
ADJ	4.5
REA EPD	0.82
IMF EPD	0.33

CED	BW	WW	YW	MILK	TM	CEM
12	1.5	91	137	29	74	7

It is not very often at all that an April born calf gets welcomed in to the picture pen. They usually just aren't mature enough yet to picture well. That being said, please look to the right! Lot 95 is so impressive. He is a great combination of powerful maternal genetics. Look at his whopping 846 lb weaning weight! This stud is top 5% of the breed for WW, YW, Milk, and TM! Don't fall asleep on this young future herd sire!

96 BNC MR. HOJER K2234

RED • MULTIPLE POLLED • BA 78%

AGA# 1550497 • Tattoo: BNC K2234

DDGR RAMPAGE 62E DDGR NOBLE MAN 79B
DDGR 9Y

BNC MISS HOJER D6456 HAD THE JUDGE ET
BNC MISS HOJER A426

SPRING YEARLING

BD	4/4/22
BW	85
WW	709
YW	1270
ADJ	3.6
REA EPD	0.60
IMF EPD	0.17

CED	BW	WW	YW	MILK	TM	CEM
8	3.0	74	112	22	59	6

Here is another bull with a rear end on him! Go figure, The Judge is in his background. That makes complete sense now. We loved the Judge for the milking ability and maternal strengths he passed down to his offspring. This guy will surely pass those traits down to your calves!



97 BNC MR. HOJER K2235

RED • MULTIPLE POLLED • BA 78%

AGA# 1550498 • Tattoo: BNC K2235

BNC INFERNO F8115 PMG 06A
BNC MISS HOJER X186

BNC MISS HOJER E780 BNC APOLLO B433
BNC MISS HOJER A345

SPRING YEARLING

BD	4/6/22
BW	82
WW	756
YW	1285
ADJ	3.7
REA EPD	0.57
IMF EPD	0.13

CED	BW	WW	YW	MILK	TM	CEM
10	1.2	72	111	22	58	7

Lot 97 has never lost his stride when it comes to adding pounds on to his larger frame. He weaned off at 756 pounds and is not slowing down. He is carrying a little more muscle and bone structure than a typical Inferno son. He would no doubt make an excellent set of steers!



98 BNC MR. HOJER K2250

RED • MULTIPLE POLLED • BA 67%

AGA# 1550510 • Tattoo: BNC K2250

BNC INFERNO F8115 PMG 06A
BNC MISS HOJER X186

BNC MISS HOJER F841 TAU UNANIMOUS 11B ET
BNC MISS HOJER Z2218

SPRING YEARLING

BD	4/21/22
BW	78
WW	727
YW	1300
ADJ	3.9
REA EPD	0.37
IMF EPD	0.17

CED	BW	WW	YW	MILK	TM	CEM
10	0.9	73	109	22	58	7

Here is the youngest bull in the offering but man oh man is he special! This guy walks around with the confidence of a Fall aged bull. If you don't turn out until mid summer, or maybe you're just looking to pick up a yearling bull and let him develop for a year, you need to take Lot 98 home with you. I promise you this is an outstanding bull!

Fall Bulls (LOTS 99-109)

What to expect from the Fall Bulls group?

As we continue to look at our operation and how to grow to the next level, adding a fall cow herd was the most efficient way to add on the next 100 cows. This allowed us to fully utilize our facilities and at the same time meet our objectives of bringing you more "aged" bulls to help you maximize your bull investment year one. As you evaluate the numbers on these Fall Born Bulls, you need to evaluate them within their group as they were developed differently than the winter and spring yearlings. Please ask if you have questions!

99 BNC MR. HOJER J1247

RED • MULTIPLE POLLED • BA 69%

AGA# 1517610 • Tattoo: BNC J1247

DDGR RAMPAGE 62E DDGR NOBLE MAN 79B
DDGR 9Y
BNC MISS HOJER B4270 SDS NEWSLINE 654S
NIKH R515

FALL BULL

BD	5/2/21
BW	80
WW	-
1/20 WT	1875
ADJ	N/A
REA EPD	0.61
IMF EPD	0.26

CED	BW	WW	YW	MILK	TM	CEM
9	1.8	77	117	25	64	6

Every now and then we hold over a very young calf to offer as a virgin two year old. But that calf has to be something special. Well here you have it. This red Rampage son had the look and the proven cow to back it up. We are thrilled with the way he matured. He weighed a scale busting 1875 POUNDS on January 20!! This guy is ready to work and will cover twice the amount of females year one!

100 BNC MR. HOJER J1261

HOMO BLACK • MULTI POLLED • BA 56%

AGA# 1543207 • Tattoo: BNC J1261

JKGF DITKA C85 SANDPOINT BUTKUS X797
JKGF LADYBUG A012
BNC MISS HOJER G9300 BNC HEADLINE C5155
BNC MISS HOJER E735

FALL BULL

BD	8/12/21
BW	58
WW	-
1/20 WT	1310
ADJ	N/A
REA EPD	0.51
IMF EPD	0.02

CED	BW	WW	YW	MILK	TM	CEM
12	0.3	78	121	23	62	6

Here is a HOMO Black aged bull that is suitable for heifer breeding. Good calving ease but still has the growth that puts him in the top 25%! I have no doubt that this guy could cover 20-25 heifers his first year.

101 BNC MR. HOJER J1263

RED • MULTIPLE POLLED • BA 75%

AGA# 1543208 • Tattoo: BNC J1263

BNC WHISKEY ECLIPSE D6292 BNC ECLIPSE A360
BNC MISS HOJER U8136
BNC MISS HOJER T807 KRN LCC MAJOR LEAGUE A502M
MKT 115

FALL BULL

BD	8/12/21
BW	69
WW	-
1/20 WT	1475
ADJ	N/A
REA EPD	0.73
IMF EPD	0.14

CED	BW	WW	YW	MILK	TM	CEM
11	-1.0	63	92	28	59	4

If you are a fan of red cattle, there would be no more satisfying feeling then turning out an aged Whiskey Eclipse son this spring. Especially one out of a 14 year old Dam of Merit! We have bred T807 to Whiskey Eclipse several times in the past and it consistently works. Lot 101 is the definition of consistency!

102 BNC MR. HOJER J1274

BLACK • MULTIPLE POLLED • BA 47%

AGA# 1543217 • Tattoo: BNC J1274

JKGF DITKA C85 SANDPOINT BUTKUS X797
JKGF LADYBUG A012
RFBG W821 SDS NEWSLINE 654S
RFBG K012

FALL BULL

BD	8/22/21
BW	72
WW	-
1/20 WT	1445
ADJ	N/A
REA EPD	0.37
IMF EPD	0.14

CED	BW	WW	YW	MILK	TM	CEM
12	-0.6	72	109	18	54	7

This great Roger Baruth cow was a foundation female in the Balancer segment of our operation. For 15 years she produced top end balancer genetics for us. This will be her last calf and man is he a dandy! Low birth weight with outstanding growth! 1445 pounds in January!!

103 BNC MR. HOJER J1276

BLACK • HOMO POLLED • PB 99.9%

AGA# 1543219 • Tattoo: BNC J1276

CKS UNRIVALED G54 CKS LEGACY E64
CKS MS EASE E57
BNC MISS HOJER G9301 BNC DAY DREAM E7340
BNC MISS HOJER F856

FALL BULL

BD	8/23/21
BW	75
WW	-
YW	1605
ADJ	N/A
REA EPD	1.00
IMF EPD	0.24

CED	BW	WW	YW	MILK	TM	CEM
12	1.8	85	133	27	70	8

GENOMIC ENHANCED EPDs Wow Lot 103 is going to produce some outstanding calves! He has been my favorite fall bull calf from the very beginning! He has a tremendous amount of length and frame. He is nearly a carbon copy of his father. Just look at what he weighed in January. 1605 LBS!! You will notice an IMMEDIATE increase in pounds at weaning when you used this stud herd bull!



LOT 103

FALL BULLS

104 BNC MR HOJER J1277

RED • MULTIPLE POLLED • PB 94%

AGA# 1543220 • Tattoo: BNC J1277

BNC WHISKEY ECLIPSE D6292 BNC ECLIPSE A360
BNC MISS HOJER U8136
BNC MISS HOJER F8274 BNC EXPRESS B4154
BNC X184

FALL BULL

BD	8/24/21
BW	70
WW	-
1/20 WT	1485
ADJ	N/A
REA EPD	0.78
IMF EPD	0.10

CED	BW	WW	YW	MILK	TM	CEM
8	2.5	78	116	28	67	3

Lot 104 and 105 are twin brothers. If I wouldn't have just told you that, you would have never known! These two bulls are absolute power houses. They have grown just as much, if not more then the other fall bulls in their contemporary group. 1485 lbs. in January and he shared his mamma! Very impressive!



105 BNC MR HOJER J1282

RED • MULTIPLE POLLED • PB 94%

AGA# 1543220 • Tattoo: BNC J1282

BNC WHISKEY ECLIPSE D6292 BNC ECLIPSE A360
BNC MISS HOJER U8136
BNC MISS HOJER F8274 BNC EXPRESS B4154
BNC X184

FALL BULL

BD	8/24/21
BW	70
WW	-
1/20 WT	1460
ADJ	N/A
REA EPD	0.78
IMF EPD	0.10

CED	BW	WW	YW	MILK	TM	CEM
8	2.5	78	116	28	67	3

Like I said before, Lot 105 is a twin brother to Lot 104. But man oh man is he a stud! Just check out the picture to the right. He looks as big, stout, and powerful as many 4 year old bulls you see when driving down the highway, and he's only 18 months old! This guy will cover some miles his first year out the gates! Older bulls of this quality are hard to find!



106 BNC MR HOJER J1280

BLACK • MULTIPLE POLLED • PB 94%

AGA# 1543223 • Tattoo: BNC J1280

CKS UNRIVALED G54 CKS LEGACY E64
CKS MS EASE E57
BNC MISS HOJER D6483 SGRI LANGFORD Z761
FMH FORTUNE ALERT 9333W

FALL BULL

BD	8/27/21
BW	73
WW	-
1/20 WT	1570
ADJ	N/A
REA EPD	0.84
IMF EPD	0.14

CED	BW	WW	YW	MILK	TM	CEM
14	-0.9	74	115	28	64	8

These Unrivaled sons have been impressive throughout this entire catalog! I've been preaching all along about how frame will equal pounds! Case and point right here with Lot 106. Second highest January weight of all the fall bulls. 1570 pounds! He came in second only to another Unrivaled son. These are big bulls everyone. More bull for the money!



107 BNC MR HOJER J1295

BLACK • MULTIPLE POLLED • PB 90%

AGA# 1543237 • Tattoo: BNC J1295

CKS UNRIVALED G54 CKS LEGACY E64
CKS MS EASE E57
BNC MISS HOJER D6476 SGRI LANGFORD Z761
BNC MISS HOJER Z303

FALL BULL

BD	9/7/21
BW	78
WW	-
1/20 WT	-
ADJ	N/A
REA EPD	0.76
IMF EPD	0.16

CED	BW	WW	YW	MILK	TM	CEM
14	-0.3	77	121	25	64	9

Out



2023 "Yearling Bull Care & Developer Program"

Everyone experiences the challenges of meeting the nutritional needs of the Yearling Bull after the First season of service. A yearling bull has different needs for Maintenance and Growth than the Older Bulls. So the challenge is, **"What do I do with my few yearling bulls that first winter after service?"**

THE 2023 HOJER RANCH "YEARLING BULL CARE AND DEVELOPER PROGRAM!!"

The 2023 Hojer Ranch Bull offering, we are offering this "Bull Care" to you for your Purchases on March 6th, 2023 and any other Yearling Bulls that you purchase from anyone in 2023.

DETAILS

- The program will provide a Balanced Ration to meet the needs of the Yearling Bull, Bedding all Winter Long to protect the Yearling Bull and Semen Testing in February of 2024 to help you take full advantage of the Insurance Policy that you purchase on your bulls to protect your investment.
- There will be a Vet Protocol, that can be done or we will do upon arrival and Livestock Insurance with be required. In the Hojer Ranch Sale, we share in the cost of the Insurance.
- Cost/day will be assessed and Invoiced Monthly. For the Bull Development Service that we currently provide, the 2022 cost was \$2.82/Head/day or \$84.60/month. 2023 Costs will be announced by Summer of 2023 as we will know our Feed Costs.
- A period of two weeks will be determined for the Delivery of Bulls in September to our ranch. All bulls are to come in at that time to minimize the "Introduction Impact". With Yearling bulls the impact is minimal and we want to keep it that way. Another period will be determined in the Spring for Pick Up of your Tested Developed Bulls.

Bull Development is a commitment to detail to insure the proper pace of development to insure the Longevity of the Bull. At Hojer Ranch, we pride ourselves in the ability to have the understanding of how to meet the Developmental needs and then execute to Get 'R Done!!

108

BNC MR HOJER J1298

RED • HOMO POLLED • BA 78%

AGA# 1543240 • Tattoo: BNC J1298

BNC INFERNO F8115 PMG 06A
BNC MISS HOJER X186
BNC MISS HOJER E7376 BNC HEADLINE C5155
BNC MISS HOJER C566

FALL BULL

BD	9/12/21
BW	80
WW	-
1/20 WT	1465
ADJ	N/A
REA EPD	0.22
IMF EPD	0.22

CED	BW	WW	YW	MILK	TM	CEM
13	-2.5	68	100	22	56	8

GENOMIC ENHANCED EPDs Lot 108 has been a stand out for the past 18 months. It has been really fun watching him develop. This guy has great eye appeal and also has the ability to be used on first calf heifers. -2.5 on BW puts him in the top 10%! You will be impressed with J1298 on March 6!



FALL BULLS

109

BNC MR HOJER J1311

BLACK • HOMO POLLED • PB 94%

AGA# 1543252 • Tattoo: BNC J1311

BNC INFERNO F8115 PMG 06A
BNC MISS HOJER X186
BNC MISS HOJER F856 DCSF POST ROCK SILVER 233U1
BNC MISS HOJER X127

FALL BULL

BD	10/17/21
BW	69
WW	-
1/20 WT	1440
ADJ	N/A
REA EPD	0.24
IMF EPD	0.13

CED	BW	WW	YW	MILK	TM	CEM
11	1.6	79	123	17	56	7

GENOMIC ENHANCED EPDs The last bull in the catalog right here. That means absolutely nothing. I could have easily had him as number one! Lot 109 is probably the thickest made fall aged bull in the pen. He has a nice moderate frame and hails from an outstanding and productive cow. Just look at the YW! 123 puts him top 5% of the breed! Circle this one twice!



2023 "You Pick 'Em, We Breed 'Em" Heifer Development Program

On Monday, March 6th, 2023 you will have the opportunity to take Advantage of a Heifer Development Program designed to help you take advantage of the best cattle market that we have seen since 2014. We have both Registered Gelbvieh/Balancer Heifers that will be sold at our March 6th production sale and 500 Commercial Gelbvieh/Cross Maternal Selected Heifers that will be offered private treaty starting on March 6th. All heifers qualify for the "You Pick 'Em, We Breed 'Em" heifer development program.

Let's look at some facts:

1. **The January 31st, 2023, Bi-Annual Cattle Report** confirmed the following:

- The US Beef Cow herd is under the 2014 low point and it is the smallest herd since 1962 and getting smaller!
- The Nation's cattle herd, all Cattle & calves was counted at -3.0% from last year, 2022. The US cow herd is still in the liquidation phase.
- Beef heifers held back for the cow herd was counted at -5.8% vs. last year, 2022. So we have the smallest cow herd since 1962 and fewer heifers waiting to join them.

2. **Weather**, the national Weather forecasters are forecasting a shift from LA Nina to Al Nino during the next several months. The transition has already begun. What this means is more rains and more grass in 2023-2024.

3. Assuming the Weather Forecasters are correct, the **Restocking** of the cow herd that was impacted by the drought, will begin in the second half of 2023 at a time when heifers retained for replacements are down -5.8%. It has never been more important to plan for your replacement needs. Both from a Quality and Price stand point. Maximizing your pasture capacity will Maximize Profitability for you!

So what does all this mean? "The Bred Heifers you buy in 2023 and enter your cow herd in 2024 will give you the opportunity to market 3 calves in the best market of this cycle! Being proactive with your replacement and restocking plan will be a critical success factor in taking full advantage of this cattle cycle." The cow/calf producer is about to get the **Leverage back to drive Your profitability**. Alan Hojer

The "You Pick 'Em, We Breed 'Em Program" works like this: On March 6th, 2023 you will bid on the Registered Heifers of your choice. Also on March 6th, we are offering 500 Maternal Selected Commercial Heifers Private Treaty. All Heifers will be available for viewing on March 6th! Talk to Blake or Alan on the Commercial Heifer Pricing.

Regardless of the price of your successful Bid, you only put down \$500/head. Hojer Ranch will then AI the Heifers to the Sires of "Your" choice, when "You want the Heifers Bred. You are then Guaranteed a Bred Heifer to be picked up on October 1st, 2023 or you get your money back. The only additional costs are Semen and Synchronizing cost.

This is an unmatched level of service in the industry today for you.

PROGRAM FEATURES:

- Fill your pastures with cows, not open heifers. Maximize pasture capacity.
- No need for heifers bulls to breed with or care for afterwards.
- Secure Price and quality on your replacements ahead of price volatility instead of reacting to price volatility and hoping to find quality.

Purebred Heifers (LOTS 110-130)

110

BNC MISS HOJER K248

BLACK • MULTIPLE POLLED • PB 99.9%

AGA# 1543449 • Tattoo: BNC K248

JDPD ASTRO 4075

JDPD ROLEX 151M
HAD PRINCESS OF A LOT 407P

BNC MISS HOJER G985

JKGF CHIEF JUSTICE C205
BNC MISS HOJER X117

BD	1/11/22
BW	71
WW	597
YW	1064
ADJ	N/A
REA EPD	0.46
IMF EPD	0.25

CED	BW	WW	YW	MILK	TM	CEM
12	-0.3	66	96	21	54	8

GROUP 1 - Time is running out if you haven't taken advantage of Astro genetics yet. There is a very small amount of semen left. Quite frankly, I'm not sure if there will ever be an opportunity again to purchase a black Astro Daughter with a Chief Justice dam. Big time opportunity here!



LOT 110

111

BNC MISS HOJER K236

BLACK • MULTIPLE POLLED • PB 87%

AGA# 1543438 • Tattoo: BNC K236

JKGF CHIEF JUSTICE C205

CCRO CAROLINA LEVERAGE 3214A
KCF MISS FORTUNE U490

BNC MISS HOJER A371

BNC E-Z RYDER
BNC N388

BD	1/8/22
BW	75
WW	554
YW	968
ADJ	N/A
REA EPD	0.52
IMF EPD	0.40

CED	BW	WW	YW	MILK	TM	CEM
12	-1.5	63	95	25	56	7

GROUP 1 - Lot 111 is the type of heifer that can change a program! She has the style, the look, and the numbers to be a future donor cow. Chief Justice semen is no longer available so don't miss out on this rare chance. Chief Justice daughters have moved our program forward and this girl will do the same for you!



112

BNC MISS HOJER K2102

BLACK • MULTIPLE POLLED • PB 94%

AGA# 1543495 • Tattoo: BNC K2102

DCH BIG ANDY D672

DCH HILLE Y109
DCH HILLE 4266

BNC MS HOJER Z242

BNC P455
BNC S609

BD	1/28/22
BW	84
WW	646
YW	1123
ADJ	N/A
REA EPD	0.60
IMF EPD	0.07

CED	BW	WW	YW	MILK	TM	CEM
12	0.7	85	120	25	67	7

GROUP 3 - I am beginning to question my decision making. Three heifers in a row that I'm letting walk off the ranch, and all three of their sires no longer available. This Lot 112 heifer gets a mountain of frame from her Raising the Bar Dam. Just look at that set of numbers to back her. 1123 pounds of yearling weight is hard to top!

114

BNC MISS HOJER K2120

BLACK • MULTIPLE POLLED • PB 99.9%

AGA# 1543509 • Tattoo: BNC K2120

CKS UNRIVALED G54

CKS LEGACY E64
CKS MS EASE E57

BNC MISS HOJER H008

JKGF CHIEF JUSTICE C205
BNC MISS HOJER Y037

BD	2/6/22
BW	81
WW	699
YW	1173
ADJ	N/A
REA EPD	0.99
IMF EPD	0.20

CED	BW	WW	YW	MILK	TM	CEM
12	2.0	92	142	31	77	7

GROUP 3 - These Unrivaled heifers are going to change the direction of our herd in an extremely positive way! They have the front end eye appeal and the added frame size that we are looking for. Not to mention the EPD profile that can not be matched. Top 1% in the breed for WW, YW, Milk, TM, and Ribeye!!



113

BNC MISS HOJER K2217

BLACK • MULTIPLE POLLED • PB 99.9%

AGA# 1549135 • Tattoo: BNC K2217

RTRT GREAT DIVIDE 503C

DCH HILLE X102
RTRT DARCI 301A

BNC MISS HOJER D6305

BNC ECLIPSE A360
BNC S6105

BD	3/23/22
BW	81
WW	801
YW	1260
ADJ	N/A
REA EPD	0.96
IMF EPD	0.18

CED	BW	WW	YW	MILK	TM	CEM
8	3.2	93	140	32	79	5

GROUP 3 - Do you want a future Herd Bull maker? Go ahead and put three check marks by Lot 113! She is a large frame Great Divide female with a mile of stretch! Just looks at her combination of performance and maternal traits! Top 1% of the breed for WW, YW, Milk, CW, Ribeye, and TM!!!

PUREBRED HEIFERS

115 BNC MISS HOJER K240

BLACK • MULTIPLE POLLED • PB 94%

AGA# 1543441 • Tattoo: BNC K240

EGL ENCORE E7166

JOB DANELL TD CHICO LOCO 28Y
GRU MS ASTRO 298Z

BEA BEA 2072Z

JOB DANELL ABSOLUTE 21U ET
BEA 5024R

BD	1/9/22
BW	75
WW	634
YW	1083
ADJ	N/A
REA EPD	0.60
IMF EPD	0.16

CED	BW	WW	YW	MILK	TM	CEM
11	1.2	69	98	13	48	6

GROUP 5 - We purchased some Encore semen on the Eagle Pass dispersal sale. I loved his pedigree being a Chico Loco out of an Astro daughter. This Lot 115 heifer has a gorgeous physical makeup with an attractive amount of rib shape. She will be an outcross for most. Very nice heifer right there. Just look to your right!



116 BNC MISS HOJER K250

BLACK • MULTIPLE POLLED • PB 94%

AGA# 1543450 • Tattoo: BNC K250

WOAK REVOLUTION 08T

KCF BENNETT KINGPIN K403
RLBG TAMARA N006

BNC MISS HOJER D6105

PMG 06A
BNC MISS HOJER Y050

BD	1/12/22
BW	75
WW	581
YW	1014
ADJ	N/A
REA EPD	0.37
IMF EPD	0.27

CED	BW	WW	YW	MILK	TM	CEM
11	0.4	66	94	25	58	5

GROUP 5 - I was lucky enough to get my hands on some Revolution semen. We used to have a few sons on the sale and I admired them for their substance and growth. The only knock I had on him was the cattle tended to carry too much front end. This Revolution daughter is anything but that! She carried the expected depth of body but has a clean and modern front end!



117 BNC MISS HOJER K2140

BLACK • MULTIPLE POLLED • PB 94%

AGA# 1543527 • Tattoo: BNC K2140

DDGR RAMPAGE 62E

DDGR NOBLE MAN 79B
DDGR 9Y

BNC MISS HOJER X117

JHG PREMONITION 6625 ET
BNC MISS HOJER T703

BD	2/22/22
BW	78
WW	614
YW	994
ADJ	N/A
REA EPD	0.58
IMF EPD	0.16

CED	BW	WW	YW	MILK	TM	CEM
11	1.5	68	98	25	59	6

GROUP 5 - Rampage heifers were very popular last year and for good reason. People recognized the breeding versatility that they possess. They have great overall natural performance. They have a tendency to work with a wide variety of bulls. I really like this Lot 117 and I bet you will too!

119 BNC MISS HOJER K2119

BLACK • MULTIPLE POLLED • PB 99.9%

AGA# 1543508 • Tattoo: BNC K2119

CKS UNRIVALED G54

CKS LEGACY E64
CKS MS EASE E57

BNC MISS HOJER G9313

BNC DAY DREAM E7340
BNC MISS HOJER E7365

BD	2/6/22
BW	72
WW	667
YW	1207
ADJ	N/A
REA EPD	0.83
IMF EPD	0.19

CED	BW	WW	YW	MILK	TM	CEM
12	1.9	83	128	28	70	7

GROUP 7 - This heifer has that type of presence that if she were to walk into a room, the room would instantly go quiet! She is super impressive in her make up and performed better than nearly every other female in her group. 1207 at yearling is flat getting it done!

118 BNC MISS HOJER K285

BLACK • MULTIPLE POLLED • PB 99.9%

AGA# 1543482 • Tattoo: BNC K285

JKGF CHIEF JUSTICE C205

CCRO CAROLINA LEVERAGE 3214A
KCF MISS FORTUNE U490

BNC MISS HOJER Y0149

DEE STALONE
BNC R522

BD	1/23/22
BW	73
WW	426
YW	887
ADJ	N/A
REA EPD	0.65
IMF EPD	0.28

CED	BW	WW	YW	MILK	TM	CEM
12	-1.5	49	78	25	50	8

GROUP 5 - Here is a very well balanced Chief Justice daughter out of a 13 year old Dam of Merit cow. As I've stated before, Chief Justice semen is no longer available, so jump on this opportunity! With proven longevity in her background, Lot 118 is sure to work for you for many years!

120 BNC MISS HOJER K2121

BLACK • MULTIPLE POLLED • PB 99.9%

AGA# 1543510 • Tattoo: BNC K2121

CKS UNRIVALED G54

CKS LEGACY E64
CKS MS EASE E57

BNC MISS HOJER H009

JKGF CHIEF JUSTICE C205
BNC MISS HOJER T711

BD	2/6/22
BW	74
WW	634
YW	1095
ADJ	N/A
REA EPD	0.99
IMF EPD	0.22

CED	BW	WW	YW	MILK	TM	CEM
13	0.1	81	124	28	69	8

GROUP 7 - You will find Hojer Ranch royalty in Lot 120's pedigree! T711 is quite possibly the best cow to walk our pastures. Her very last calf she had was a Chief daughter that looks like she will become a new foundation female for us. This is a very rare chance to buy in on this blood line!

121 BNC MISS HOJER K2131

BLACK • MULTIPLE POLLED • PB 99.9%

AGA# 1543519 • Tattoo: BNC K2131

CKS UNRIVALED G54

CKS LEGACY E64
CKS MS EASE E57

BNC MISS HOJER H0135

RTRT GREAT DIVIDE 503C
BNC MISS HOJER A415

BD	2/14/22
BW	75
WW	644
YW	1151
ADJ	N/A
REA EPD	0.88
IMF EPD	0.12

CED	BW	WW	YW	MILK	TM	CEM
13	0.7	80	124	32	72	8

GROUP 7 - Talk about a universally friendly breeding piece right here! This Unrival daughter is a low birth with big growth package. She could be an interesting breeding piece for a purebred operation or she could make some outstanding Balancers!



122 BNC MISS HOJER K2146

BLACK • MULTIPLE POLLED • PB 93%

AGA# 1543533 • Tattoo: BNC K2146

CKS UNRIVALED G54

CKS LEGACY E64
CKS MS EASE E57

BNC MISS HOJER G9291

DDGR RAMPAGE 62E
BNC MISS HOJER Z303

BD	2/26/22
BW	79
WW	546
YW	1126
ADJ	N/A
REA EPD	0.85
IMF EPD	0.16

CED	BW	WW	YW	MILK	TM	CEM
12	1.2	80	126	27	67	7

GROUP 7 - What do you get when you cross a Rampage daughter with Unrival? You get a high performing female that will produce some of your heaviest calves at weaning! This is a true herd bull maker right here!

HEIFER FINANCE PROGRAM

Hojer Ranch is offering terms of **\$500** down on **March 6th, 2023** and the balance will be due on **October 1st, 2023** when the heifers are picked up at our ranch.

**We want to be your
Heifer Replacement Source!!**

123 BNC MISS HOJER K2106

RED • MULTIPLE POLLED • PB 94%

AGA# 1543497 • Tattoo: BNC K2106

JNCC RED DIRECTIVE 367A

ASCH JNCC RESOLUTE DIRECTIVE
JNCC RIKKI FORTUNE 09X

BNC MS HOJER Z277

JDPD ASTRO 407S
BNC MISS HOJER W958

BD	1/30/22
BW	69
WW	623
YW	1071
ADJ	N/A
REA EPD	0.56
IMF EPD	-0.01

CED	BW	WW	YW	MILK	TM	CEM
13	0.5	73	102	19	55	8

GROUP 2 - Lot 123 is a super attractive red purebred. The slick and stylish front end combined with her beautiful rib shape makes for a very unique purebred female. Her dark cherry red coat color absolutely makes her stand out! This is a top notch heifer and you will be hard pressed to find one much better!



124 BNC MISS HOJER K268

RED • MULTIPLE POLLED • PB 94%

AGA# 1543467 • Tattoo: BNC K268

BNC WHISKEY ECLIPSE D6292

BNC ECLIPSE A360
BNC MISS HOJER U8136

BNC MISS HOJER C552

BCFG BUTLERS RED OAK 908W
BNC MISS HOJER X1114

BD	1/15/22
BW	80
WW	605
YW	1002
ADJ	N/A
REA EPD	0.62
IMF EPD	0.09

CED	BW	WW	YW	MILK	TM	CEM
9	1.0	69	101	24	59	3

GROUP 2 - We retained the full sister to Lot 124 last year. You guys won't believe the Finnegan sired bull calf she has at her side right now. He is an early front runner to be one of our top Red Bulls in next year's sale. We wanted to share the wealth with you. K268 is a spitting image of her older sister and will be a great addition to your herd!



PUREBRED HEIFERS

125 BNC MISS HOJER K2111

RED • MULTIPLE POLLED • PB 85%

AGA# 1543501 • Tattoo: BNC K2111

PHS PROHART OL'GLORY 935G OGSF CENTURION 120C
PHS PROHART BRANDY 516C

BNC MISS HOJER D6156 PMG 06A
BNC MS HOJER Z242

BD	1/31/22
BW	77
WW	629
YW	1075
ADJ	N/A
REA EPD	0.65
IMF EPD	0.22

CED	BW	WW	YW	MILK	TM	CEM
9	2.2	78	111	21	60	6

GROUP 6 - Here is the first opportunity almost anywhere to purchase some Ol' Glory genetics. He was the Futurity champion a couple years ago. This Lot 125 heifer is pretty cool in the fact that she is red herself, but both parents are black. That makes her by birth diluter free.



126 BNC MISS HOJER K2148

RED • MULTIPLE POLLED • PB 94%

AGA# 1543535 • Tattoo: BNC K2148

BNC INFERNO F8115 PMG 06A
BNC MISS HOJER X186

BNC MISS HOJER D677 HAD THE JUDGE ET
BNC MS HOJER Z277

BD	2/27/22
BW	76
WW	502
YW	1037
ADJ	N/A
REA EPD	0.48
IMF EPD	0.09

CED	BW	WW	YW	MILK	TM	CEM
13	0.3	62	92	15	46	8

GROUP 6 - If you're looking for a dazzling purebred female to show this summer at the Junior Nationals up here in South Dakota, Lot 126 would be on the top of my list! Just look at the eye appeal she has and the femininity she possesses. The is a grade A female!



127 BNC MISS HOJER K2216

RED • MULTIPLE POLLED • PB 88%

AGA# 1549134 • Tattoo: BNC K2216

BNC INFERNO F8115 PMG 06A
BNC MISS HOJER X186

BNC MISS HOJER D6428 BNC TAYLOR MADE
BNC MISS HOJER C539

BD	3/22/22
BW	66
WW	519
YW	840
ADJ	N/A
REA EPD	0.46
IMF EPD	0.19

CED	BW	WW	YW	MILK	TM	CEM
14	-0.3	60	87	18	48	9

GROUP 6 - Here is one of the youngest females on our sale this year. If you are a breeder that doesn't start calving until March or April, Lot 127 would be a good option for you. I really love the way these Inferno heifers are built. They have that modern day appeal that the industry wants!

129 BNC MISS HOJER K2118

RED • MULTIPLE POLLED • PB 88%

AGA# 1543507 • Tattoo: BNC K2118

JNCC RED DIRECTIVE 367A ASCH JNCC RESOLUTE DIRECTIVE
JNCC RIKKI FORTUNE 09X

BNC MISS HOJER C597 BNC CHEROKEE JUDGE
BNC P416

BD	2/6/22
BW	78
WW	494
YW	1014
ADJ	N/A
REA EPD	0.62
IMF EPD	0.07

CED	BW	WW	YW	MILK	TM	CEM
11	1.1	72	98	22	58	5

GROUP 10- You've got to love it when you can still find The Judge in a female's lineage. We have decades of experience to be able to confidently say that this girl will have a great udder, produce a ton of milk, and wean off a scale busting calf every year with The Judge in her pedigree!

128 BNC MISS HOJER K289

RED • MULTIPLE POLLED • PB 88%

AGA# 1543485 • Tattoo: BNC K289

JNCC RED DIRECTIVE 367A ASCH JNCC RESOLUTE DIRECTIVE
JNCC RIKKI FORTUNE 09X

BEA BEA 3138A BEA 801U ET
BEA 4024P

BD	1/26/22
BW	80
WW	558
YW	995
ADJ	N/A
REA EPD	0.57
IMF EPD	0.06

CED	BW	WW	YW	MILK	TM	CEM
11	1.3	75	105	16	54	5

GROUP 10 - Outcross red genetics right here! We gave Red Directive a shot and are pleased with the results. This girl has the pieces to match up well with several of the red herd sires that are out there. I think she would work great with a Finnegan or a KHR 03F or even a Trade Secret.

130 BNC MISS HOJER K2141

RED • MULTIPLE POLLED • PB 85%

AGA# 1543528 • Tattoo: BNC K2141

PHS PROHART OL'GLORY 935G OGSF CENTURION 120C
PHS PROHART BRANDY 516C

BNC MISS HOJER B540 DVE DAVIDSON CASSANOVA
BNC MISS HOJER A3253

BD	2/23/22
BW	75
WW	454
YW	941
ADJ	N/A
REA EPD	0.56
IMF EPD	0.39

CED	BW	WW	YW	MILK	TM	CEM
11	-0.4	63	94	21	52	7

GROUP 10 - Complete outcross heifer right here! There aren't many operations in the country that have used either Cassanova or Ol Glory. Here is a combination of the two.

Balancer Heifers (LOTS 131-148)

131

BNC MISS HOJER K277

BLACK • MULTIPLE POLLED • BA 74%

AGA# 1543475 • Tattoo: BNC K277

CKS UNRIVALED G54

CKS LEGACY E64
CKS MS EASE E57

BNC MISS HOJER G004

JKGF DITKA C85
BNC MISS HOJER D6274

BD	1/18/22
BW	69
WW	553
YW	984
ADJ	N/A
REA EPD	0.77
IMF EPD	0.14

CED	BW	WW	YW	MILK	TM	CEM
14	-0.4	78	122	24	63	8

GROUP 4 - An EPD profile like the one above is nearly impossible to achieve. Top 25% in 5 different statistical traits! I am really liking the result of breeding up some of our young balancer females. Playing with heterosis will always light a spark in the hybrid vigor!



132

BNC MISS HOJER K2143

BLACK • MULTIPLE POLLED • BA 75%

AGA# 1543530 • Tattoo: BNC K2143

BNC DAY DREAM E7340

CRAN DREAM ON Y054
BNC MISS HOJER D661

BNC MISS HOJER D710

BNC E-Z RYDER
BNC MISS HOJER B4123

BD	2/23/22
BW	71
WW	525
YW	1111
ADJ	N/A
REA EPD	0.43
IMF EPD	0.36

CED	BW	WW	YW	MILK	TM	CEM
11	-0.4	64	97	25	57	7

GROUP 4 - I absolutely love this 132 heifer! She has a ton of power and depth of body! You could breed her up to purebred status or breed her down to Balancer. Both ways would work fantastic. If this heifer was in human form, she could make the Dallas Cowboys cheerleading squad without even needing a tryout. That's how impressive she is!



133

BNC MISS HOJER K2224

BLACK • MULTIPLE POLLED • BA 75%

AGA# 1550130 • Tattoo: BNC K2224

FHG DEEP END 577F ET

BIEBER DEEP END B597
FHG FLYING H MS 51P 171Y

BNC MISS HOJER G9105

BNC CONCRETE C609
BNC MISS HOJER U8174

BD	3/28/22
BW	71
WW	705
YW	1067
ADJ	N/A
REA EPD	0.74
IMF EPD	0.28

CED	BW	WW	YW	MILK	TM	CEM
12	1.0	83	122	24	65	6

GROUP 9 - You just can't go wrong with a three quarter blood female. I truly believe that a 75% female is the best kind. They are high enough percentage that they maintain all of the positive attributes that Gelbvieh have. And they still have a dose of hybrid vigor!

135

BNC MISS HOJER K2253

BLACK • MULTIPLE POLLED • BA 59%

AGA# 1550513 • Tattoo: BNC K2253

FHG DEEP END 577F ET

BIEBER DEEP END B597
FHG FLYING H MS 51P 171Y

BNC MISS HOJER Z2250

RFBG BALANCE PRO
BNC MISS HOJER U8154

BD	4/4/22
BW	73
WW	730
YW	
ADJ	N/A
REA EPD	0.66
IMF EPD	0.38

CED	BW	WW	YW	MILK	TM	CEM
13	0.5	77	115	22	60	7

GROUP 9 - This heifer could be a sleeper. So don't let that happen! She is one of the youngest in the offering but you would never tell it by looking at her. She is as big and stout as some of the other heifers that are 45 days older than her! She's got a great set of numbers and could be a valuable addition to any herd!



134

BNC MISS HOJER K2230

BLACK • MULTIPLE POLLED • BA 48%

AGA# 1550493 • Tattoo: BNC K2230

FHG DEEP END 577F ET

BIEBER DEEP END B597
FHG FLYING H MS 51P 171Y

BNC MISS HOJER E7160

TAU UNANIMOUS 11B ET
BNC MISS HOJER W950

BD	4/1/22
BW	75
WW	729
YW	1166
ADJ	N/A
REA EPD	0.58
IMF EPD	0.39

CED	BW	WW	YW	MILK	TM	CEM
12	0.0	83	122	26	68	7

GROUP 9 - This girl has absolutely been crushing it. 729 weaning with a 1166 yearling weight! Its not just about the weights. This Deep End daughter is down right flashy! She could be a top show prospect.

BALANCER HEIFERS

136 BNC MISS HOJER K244

BLACK • MULTIPLE POLLED • BA 47%

AGA# 1543445 • Tattoo: BNC K244

JKGF DITKA C85

SANDPOINT BUTKUS X797
JKGF LADYBUG A012

BNC MISS HOJER D6101

TAU UNANIMOUS 11B ET
BNC RFBG Z2299

BD	1/10/22
BW	80
WW	561
YW	1002
ADJ	N/A
REA EPD	0.37
IMF EPD	0.09

CED	BW	WW	YW	MILK	TM	CEM
10	0.8	80	122	22	62	6

GROUP 11 - Ditka has been the most consistent Balancer herd sire we have ever used. I know exactly what I'm going to get every time. A low birth weight animal that gets up and grows. This girl is moderate in her frame and is massively thick throughout. She would make a very nice fit in a breed up program.

137 BNC MISS HOJER K2114

BLACK • MULTIPLE POLLED • BA 50%

AGA# 1543503 • Tattoo: BNC K2114

BNC CLASS ACTION G915

JKGF CHIEF JUSTICE C205
BNC MISS HOJER A356

LAZY TV MS REVELATION D6367

CONNEALY REVELATION 2353
LAZY TV FED EX A474

BD	2/1/22
BW	75
WW	490
YW	1041
ADJ	N/A
REA EPD	0.46
IMF EPD	0.46

CED	BW	WW	YW	MILK	TM	CEM
12	-0.7	68	108	21	55	7

GROUP 11 - I absolutely love this Balancer Class Action daughter. This is trending to be the most beneficial place to use Class Action. Bring a little style from some Angus genetics, and let him bring the power. That is one very attractive female to your right!

138 BNC MISS HOJER K2193

BLACK • MULTIPLE POLLED • BA 73%

AGA# 1549112 • Tattoo: BNC K2193

RTRT GREAT DIVIDE 503C

DCH HILLE X102
RTRT DARCI 301A

BNC RFBG Z2299

SDS MAINLINE 986W
RFBG L030

BD	3/15/22
BW	72
WW	433
YW	981
ADJ	N/A
REA EPD	0.52
IMF EPD	0.22

CED	BW	WW	YW	MILK	TM	CEM
11	-0.6	67	103	19	52	6

GROUP 11 - We are now on year 5 of breeding and calving out Great Divide females. They have shown a crazy consistency of being great milking females with an unprecedented docile disposition. Great Divide is still pretty much an outcross in most herd books. So why not tap into some new and Hojer Ranch proven genetics. You will not be disappointed!

139 BNC MISS HOJER K2219

BLACK • MULTIPLE POLLED • BA 67%

AGA# 1549137 • Tattoo: BNC K2219

RTRT GREAT DIVIDE 503C

DCH HILLE X102
RTRT DARCI 301A

BNC MISS HOJER B451

SIXM RED 6 MILE FULL THROTTLE 171T
RFBG MISS Y107

BD	3/24/22
BW	77
WW	614
YW	1036
ADJ	N/A
REA EPD	0.62
IMF EPD	0.18

CED	BW	WW	YW	MILK	TM	CEM
10	1.6	81	124	26	66	6

GROUP 11 - This is a very attractive looking and stylish Great Divide heifer. Her B451 dam really added an element of showmanship to her design. It appears she will pass on a lower birthweight to her progeny but will have above average growth.

140 BNC MISS HOJER K2167

BLACK • MULTIPLE POLLED • BA 69%

AGA# 1546787 • Tattoo: BNC K2167

DDGR RAMPAGE 62E

DDGR NOBLE MAN 79B
DDGR 9Y

BNC MISS HOJER W955

SDS NEWSLINE 654S
BNC MISS HOJER T7133

BD	3/4/22
BW	84
WW	451
YW	1057
ADJ	N/A
REA EPD	0.45
IMF EPD	0.31

CED	BW	WW	YW	MILK	TM	CEM
9	1.9	61	93	19	50	6

GROUP 12 - How do you add a little finesse and style to a Rampage daughter? You cross him up with a tried and true Newsline female. Lot 140 is the perfect example of what you can get by mixing up genetics. She is a very attractive female with a lot of functionality!



141 BNC MISS HOJER 2204

BLACK • MULTIPLE POLLED • BA 69%

AGA# 1549123 • Tattoo: BNC K2204

DDGR RAMPAGE 62E

DDGR NOBLE MAN 79B
DDGR 9Y

BNC MISS HOJER D652

SIXM RED 6 MILE FULL THROTTLE 171T
DEE S86

BD	3/19/22
BW	80
WW	700
YW	1170
ADJ	N/A
REA EPD	0.58
IMF EPD	0.18

CED	BW	WW	YW	MILK	TM	CEM
11	1.4	76	118	26	64	6

GROUP 12 - Goodness gracious great balls of fire! My apologies, I just watched the new Top Gun Movie. All kidding aside, take a look at that 700 lb weaning weight and that 1170 lb yearling weight! These Rampage genetics are something special, everyone. The Diamond D genetics are really shining through with this girl!

142 BNC MISS HOJER K2212

BLACK • MULTIPLE POLLED • BA 81%

AGA# 1549130 • Tattoo: BNC K2212

DDGR RAMPAGE 62E

DDGR NOBLE MAN 79B
DDGR 9Y

BNC MISS HOJER C561

BNC MR HOJER Y036
SGRI S639

BD	3/21/22
BW	72
WW	611
YW	992
ADJ	N/A
REA EPD	0.69
IMF EPD	0.33

CED	BW	WW	YW	MILK	TM	CEM
10	2.3	79	116	20	60	8

GROUP 12 - I want everyone to remember what I am about to say next, and then in three years call me and tell me if I was wrong. These Rampage daughters are going to be the top producing females on Hojer Ranch in the next 3-5 years. You seriously need to take this heifers home and let them go to work for you!

143 BNC MISS HOJER K2245

BLACK • MULTIPLE POLLED • BA 81%

AGA# 1550505 • Tattoo: BNC K2245

DDGR RAMPAGE 62E DDGR NOBLE MAN 79B
DDGR 9Y

BNC MISS HOJER C5280 BNC COMPLETE PACKAGE Z272
BNC P494

BD	4/12/22
BW	84
WW	799
YW	1057
ADJ	N/A
REA EPD	0.75
IMF EPD	0.31

CED	BW	WW	YW	MILK	TM	CEM
9	3.1	80	124	29	69	5

GROUP 12 - Gee wiz everyone! These Rampage daughters are just flat out killing it! Top 15% for both weaning and yearling weight! And to add to that, top 1% for milk and TM! These are the type of genetics the Gelbvieh breed needs to move forward and to maintain female dominance in the Industry!

144 BNC MISS HOJER K2215

RED • MULTIPLE POLLED • BA 75%

AGA# 1549133 • Tattoo: BNC K2215

FHG DEEP END 577F ET BIEBER DEEP END B597
FHG FLYING H MS 51P 171Y

BNC MISS HOJER X1114 JDPD ASTRO 407S
BNC S692

BD	3/22/22
BW	73
WW	696
YW	1089
ADJ	N/A
REA EPD	0.59
IMF EPD	0.31

CED	BW	WW	YW	MILK	TM	CEM
14	-1.0	77	114	20	58	8

GROUP 8 - Just take one moment to look at the set of numbers on this Lot 144 female. Top 20% CE and BW and top 25% growth. Not to mention she is 75% Gelbvieh. You want to make some purebreds with curve bending numbers? This heifer right here is what you need to reach that end game!

145 BNC MISS HOJER K2145

RED • MULTIPLE POLLED • BA 69%

AGA# 1543532 • Tattoo: BNC K2145

FHG DEEP END 577F ET BIEBER DEEP END B597
FHG FLYING H MS 51P 171Y

BNC MISS HOJER E7241 JMDS FREIGHTLINER
BNC MISS HOJER Y045

BD	2/25/22
BW	77
WW	523
YW	1007
ADJ	N/A
REA EPD	0.54
IMF EPD	0.29

CED	BW	WW	YW	MILK	TM	CEM
14	0.2	70	108	24	59	7

GROUP 8 - If you're needing to add a little more "Cow Power" into your herd, just take a peek to the right. Let's take a look here, I see Y045, one of the best Astro cows to ever walk to grounds. I see Freightliner, Phenomenal phenotype and growth. And then I see Deep End, a massively made balancer with unmatched performance. Dang good female right here!

146 BNC MISS HOJER K291

RED • MULTIPLE POLLED • BA 69%

AGA# 1560720 • Tattoo: BNC K291

RTRT GREAT DIVIDE 503C DCH HILLE X102
RTRT DARCI 301A

BNC MISS HOJER C5258 SGRI CHISEL X603
BNC MISS HOJER W929

BD	1/26/22
BW	57
WW	568
YW	1056
ADJ	N/A
REA EPD	0.70
IMF EPD	0.24

CED	BW	WW	YW	MILK	TM	CEM
12	-0.7	73	108	26	62	8

GROUP 13 - This Lot 146 heifer is a twin but she has a boat load of potential. Her style and makeup is virtually flawless. She just needs a little more time to develop since she shared her mom with her sister. You would not be taking a gamble on this heifer, you would be making a great decision!

147 BNC MISS HOJER K2241

RED • MULTIPLE POLLED • BA 63%

AGA# 1550503 • Tattoo: BNC K2241

FHG DEEP END 577F ET BIEBER DEEP END B597
FHG FLYING H MS 51P 171Y

BNC MISS HOJER C5338 HAD THE JUDGE ET
BNC MISS HOJER T807

BD	4/9/22
BW	75
WW	651
YW	1046
ADJ	N/A
REA EPD	0.72
IMF EPD	0.33

CED	BW	WW	YW	MILK	TM	CEM
12	-0.4	72	109	23	59	7

GROUP 13 - I cannot stress enough how influential The Judge was on our cow herd. He added an element of maternal superiority that is still paying dividends every single year. There will not be many more opportunities to add The Judge genetics into your program. Don't miss this moment!

148 BNC MISS HOJER K2238

RED • MULTIPLE POLLED • BA 50%

AGA# 1550500 • Tattoo: BNC K2238

FHG DEEP END 577F ET BIEBER DEEP END B597
FHG FLYING H MS 51P 171Y

BNC MISS HOJER A373 KRN LCC MAJOR LEAGUE A502M
DEE S86

BD	4/8/22
BW	64
WW	662
YW	1055
ADJ	N/A
REA EPD	0.59
IMF EPD	0.34

CED	BW	WW	YW	MILK	TM	CEM
15	-1.6	72	105	24	60	8

GROUP 13 - If calving ease is what you want your final destination to be, let Lot 148 be your last stop! I don't believe we have any other females with a 15 CE and a -1.6 BW. You could breed her right and create the next heifer bull phenom! Or you can stack the deck and breed her heavy and get a very complete package. I just love the possibilities with this girl!



500 MATERNAL EDGE 2023 COMMERCIAL FEMALES

Gelbvieh Influenced Commercial Open Heifers



In 2023, we will be selling 500 commercial Heifers Private Treaty at our Ranch. Please talk to Blake and Alan. You can have the opportunity to walk through the heifers and pick the ones that you want for a down payment of \$500/hd.

We will use the "You Pick 'Em, We Breed 'Em" protocol.

You pick the semen and we do all of the work. You pick up your bred heifers on October 1st, 2023. If the heifer is open, we refund the \$500!!

No risk to you, just Pick 'Em!!

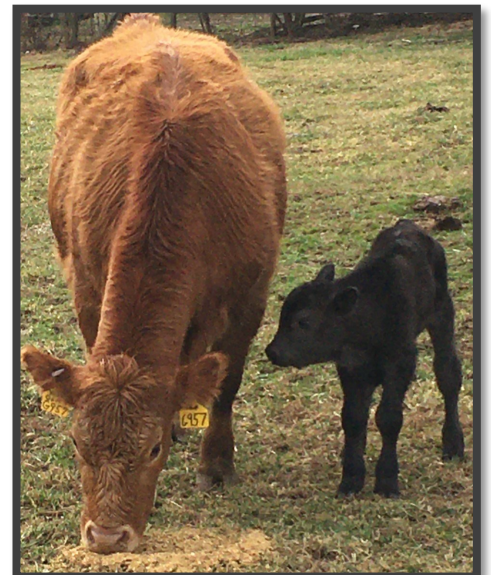
The only costs you have above the purchase price is the Semen and Synchronizing cost. Sexed Semen may be available upon request and you may make arrangements to keep the heifers at our place beyond October 1st, 2023.



“ ANTHONY LAWRENCE
from Clarkesville, Georgia said...

In 2020, I bought three heifers from the Hojers based completely off of their recommendations. I have never bought cattle that far from home before. I trusted them to make the breeding decisions and they lined up all of the trucking arrangements that dropped the girls off at my doorstep. All three heifers calved un-assisted and the disposition was AMAZING! I've had cattle for 30 years, and these heifers have the best udders of any heifers that have been on my farm!

”





Forever In Our Hearts

We give to you our love, you can only guess
how much you gave to us in happiness.
You must not tie yourself to us with tears.
Be happy that we had so many beautiful years.

It's only for awhile that we must part.
So, bless the memories within your heart
And then, when you must come this way alone,
we will greet you with a smile and say,

"Welcome Home"

Mom went to her forever home on April 19, 2022.
Selfishly, we wish she was here with us. But the Lord
had other plans and her work here was complete.
As we prepare for our 31st sale, we will forever miss
the countless gallons of pickles, the dozens of
homemade donuts, the buckets of chocolate chip
cookies, and the apple bars drizzled with frosting that
she provided year after year for all of us to enjoy!
Rest in peace, Mom. We will miss you.



HOJER RANCH 31st Production Sale





Alan & Pam Hojer
43968 208th Street
Lake Preston, SD 57249



PRSR
FIRST CLASS
U.S. POSTAGE
PAID
PERMIT 180

FIRST CLASS MAIL

PREPARED ESPECIALLY FOR

Lot 19



Lot 8



Lot 44



PERFORMANCE GENETICS FOR YOUR TOMORROW

Alan & Pam | Blake & Jenn

43968 208th Street | Lake Preston, SD 57249 | Ranch: 605-860-1326 | Blake cell: 605-860-0139

Online: HojerRanch.com | Email: hojer@hojerranch.com